

F03835

INSPECTION

1. CHECK FLUID LEVEL

- Keep the vehicle level.
- With the engine stopped, check the fluid level in the oil reservoir.

If necessary, add fluid.

Fluid: ATF DEXRON® II or III

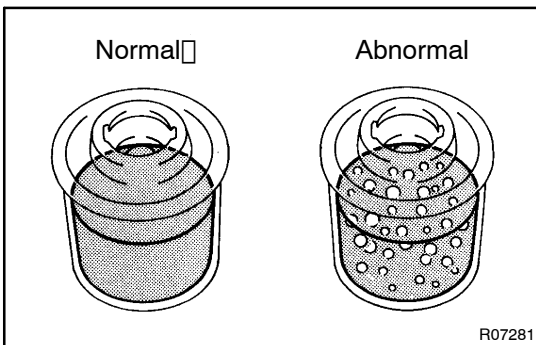
HINT:

Check that the fluid level is within the HOT LEVEL range on the reservoir cap dipstick.

If the fluid is cold, check that it is within the COLD LEVEL range.

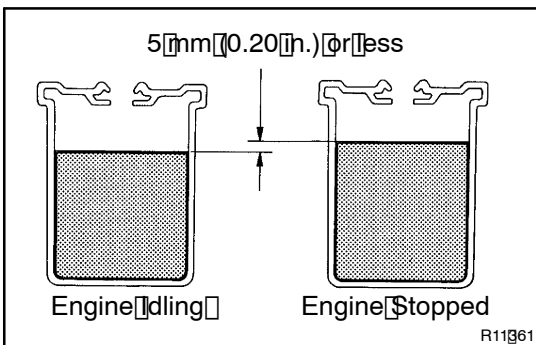
- Start the engine and run it at idle.
- Turn the steering wheel from lock to lock several times to boost fluid temperature.

Fluid temperature: 30°C (176°F)



R07281

- Check for foaming or emulsification. If there is foaming or emulsification, bleed power steering system (See page SR-4)



R11961

- With the engine idling, measure the fluid level in the oil reservoir.
- Stop the engine.
- Wait a few minutes and remeasure the fluid level in the oil reservoir.

Maximum fluid level rise: 5 mm (0.20 in.)

If a problem is found, bleed power steering system (See page SR-4)

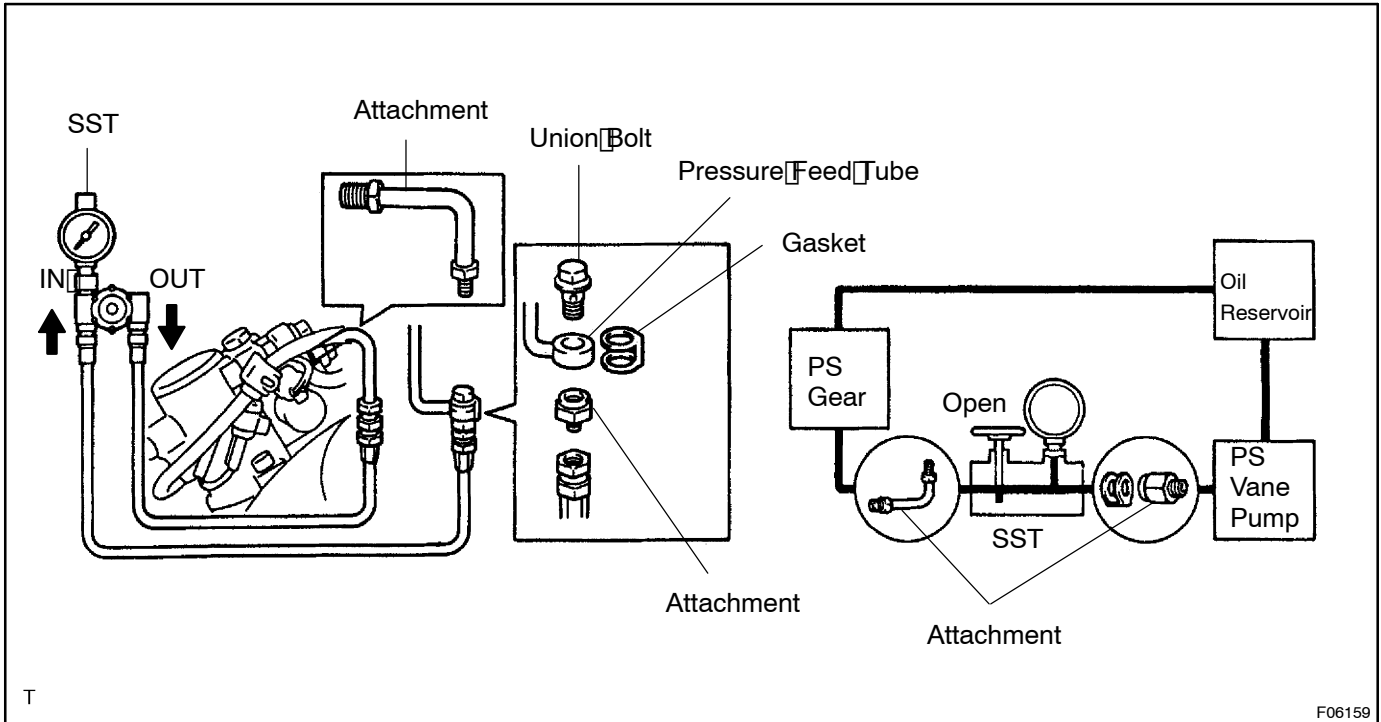
- Check the fluid level.

2. CHECK STEERING FLUID PRESSURE

- Disconnect the pressure feed tube from the PS gear (See page SR-32).
- Connect SST, as shown in the illustration below.
SST 09640-1010, 09641-1010, 09641-1030, 09641-1040)

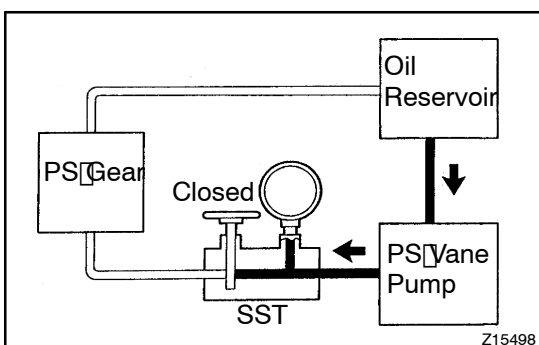
NOTICE:

Check that the valve of the SST is in the open position.



- Bleed the power steering system (See page SR-4).
- Start the engine and run it at idle.
- Turn the steering wheel from lock to lock several times to boost fluid temperature.

Fluid temperature: 80 °C (176 °F)

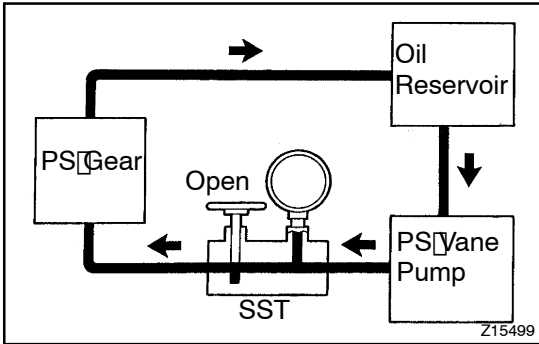


- With the engine idling, close the valve of the SST and observe the reading on the SST.

**Minimum fluid pressure:
9,316 kPa (95 kg/cm², 1,351 psi)**

NOTICE:

- Do not keep the valve closed for more than 10 seconds.
- Do not let the fluid temperature become too high.



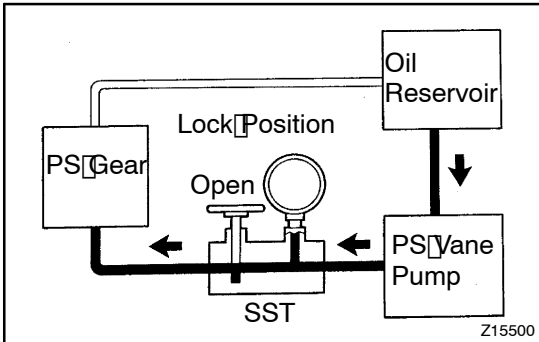
- (g) With the engine idling, open the valve fully.
 (h) Measure the fluid pressure at engine speeds of 1,000 rpm and 3,000 rpm.

Difference fluid pressure:

490 kPa (5 kgf/cm², 71 psi) or less

NOTICE:

Do not turn the steering wheel.



- (i) With the engine idling and valve fully opened, turn the steering wheel to full lock.

Minimum fluid pressure:

9,316 kPa (95 kgf/cm², 1,351 psi)

NOTICE:

- Do not maintain lock position for more than 10 seconds.
 - Do not let the fluid temperature become too high.
- (j) Disconnect the SST.

SST 09640-10010 (09641-01010, 09641-01030, 09641-01040)

- (k) Connect the pressure feed tube to the PS gear
 (See page SR-32).

- (l) Bleed the power steering system (See page SR-4)