

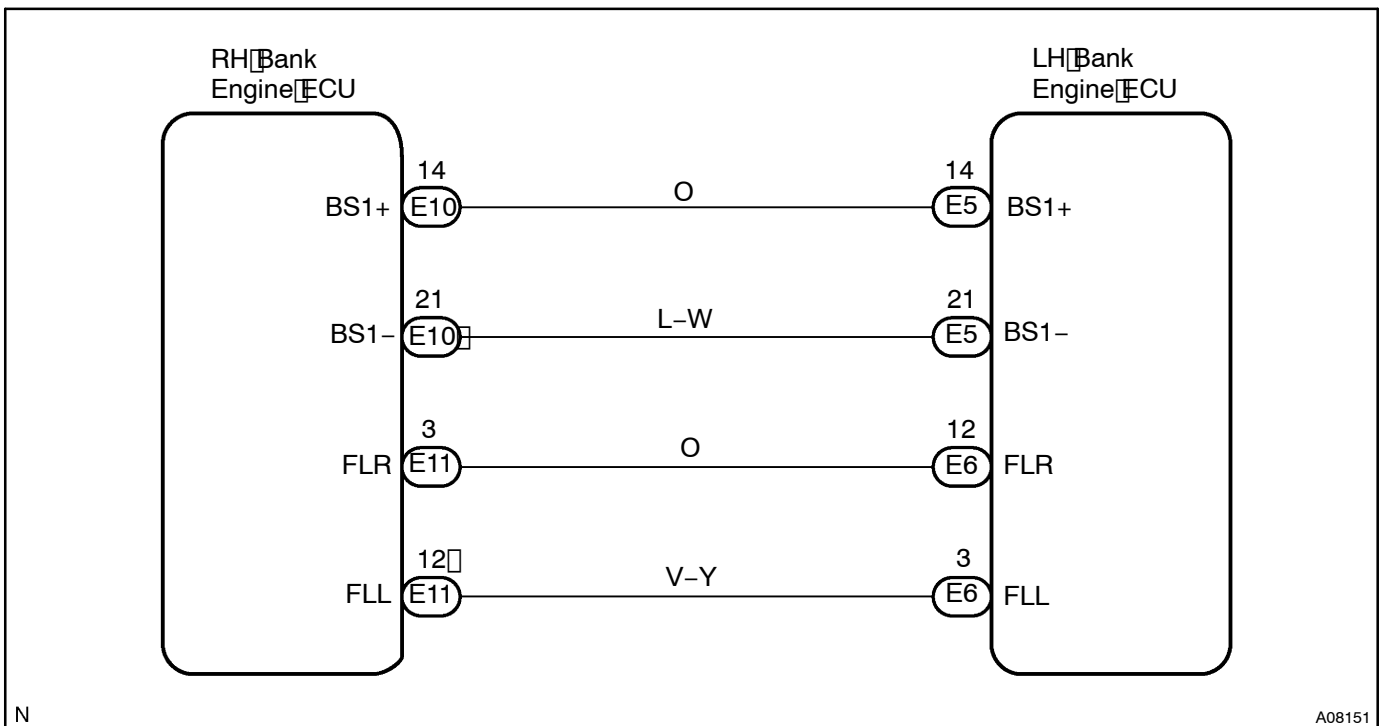
DTC	P1640/89	Communication Malfunction No.1
------------	-----------------	---------------------------------------

CIRCUIT DESCRIPTION

LH bank engine ECU and RH bank engine ECU always communicate the data for vehicle general control and diagnosis function each other via communication line.

DTC No.	Detection Item	Trouble Area
P1640/89	When run-pulse signal of ECU communication is fixed ON or OFF for 88 msec. at opposite ECU.	<ul style="list-style-type: none"> • Wire harness • Engine ECU

WIRING DIAGRAM



INSPECTION PROCEDURE

1	Check for open and short in harness and connector between each terminals BS1+ and BS1- of LH and RH bank engine ECU (See page IN-20).
---	---



Check and replace opposite bank engine ECU when that ECU detects P1640/89.