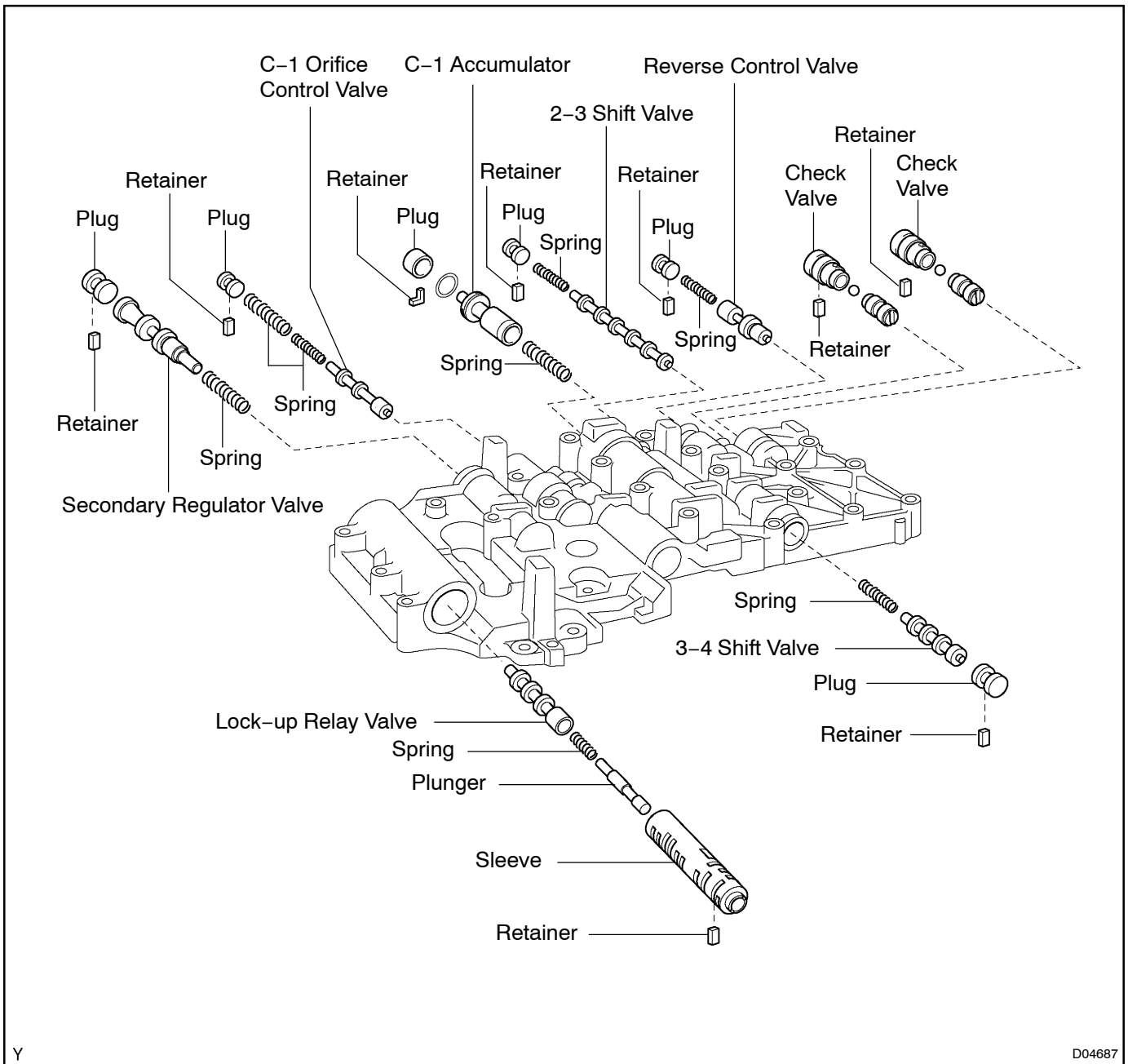


UPPER VALVE BODY

LOCATION COMPONENTS

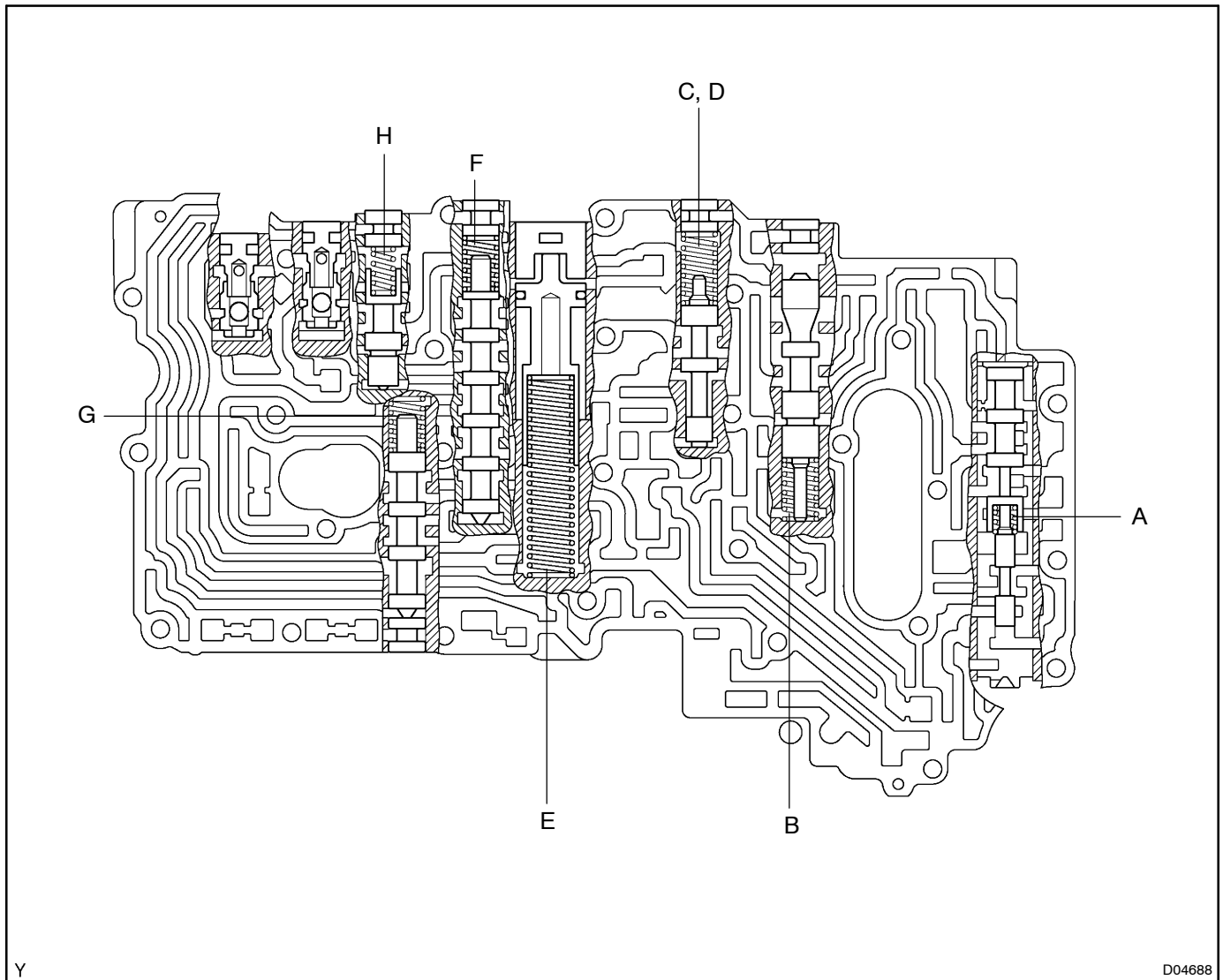
AT0H9-02



SPRING

HINT:

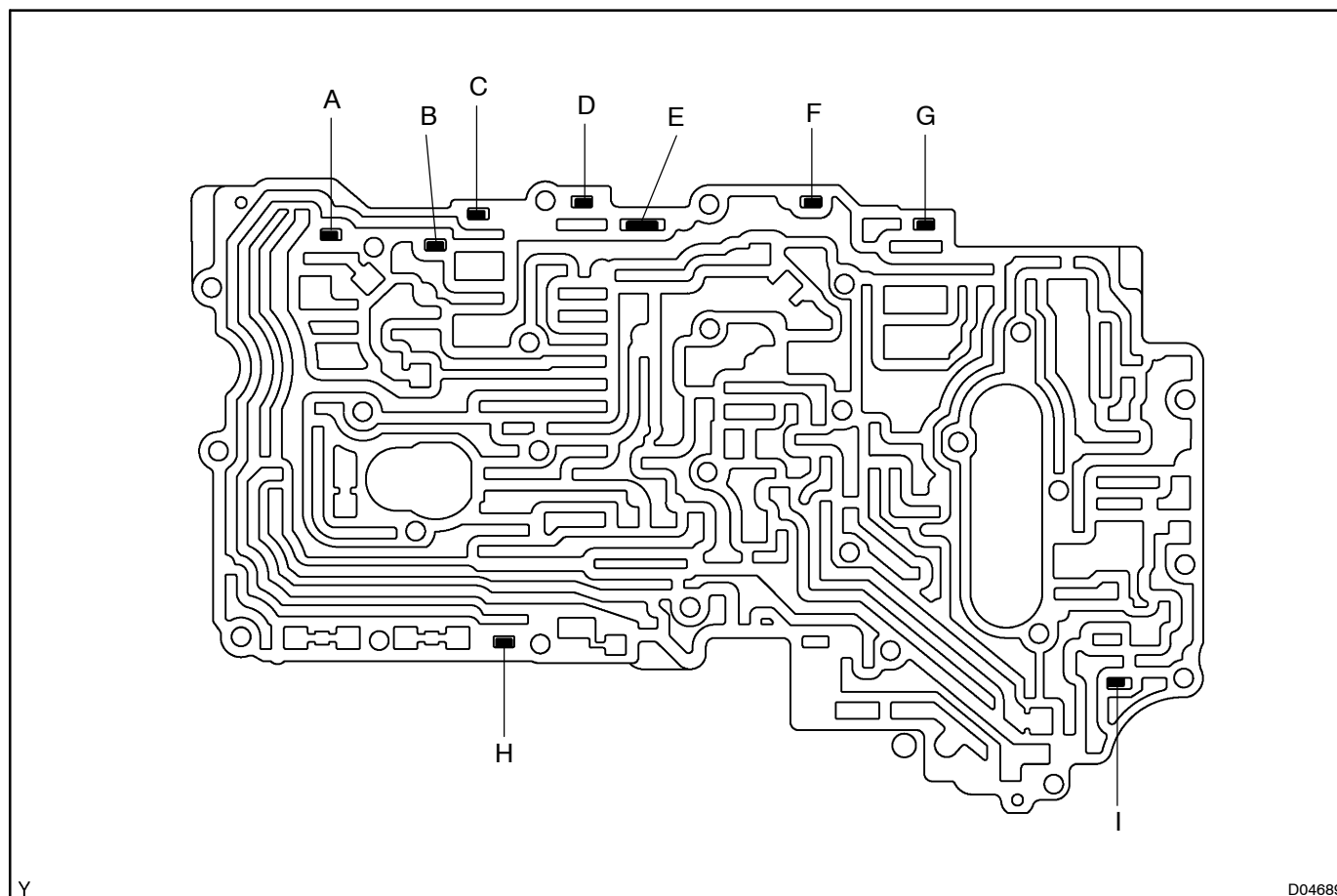
During reassembly, please refer to the spring specifications below to help you to differentiate among the different springs.



D04688

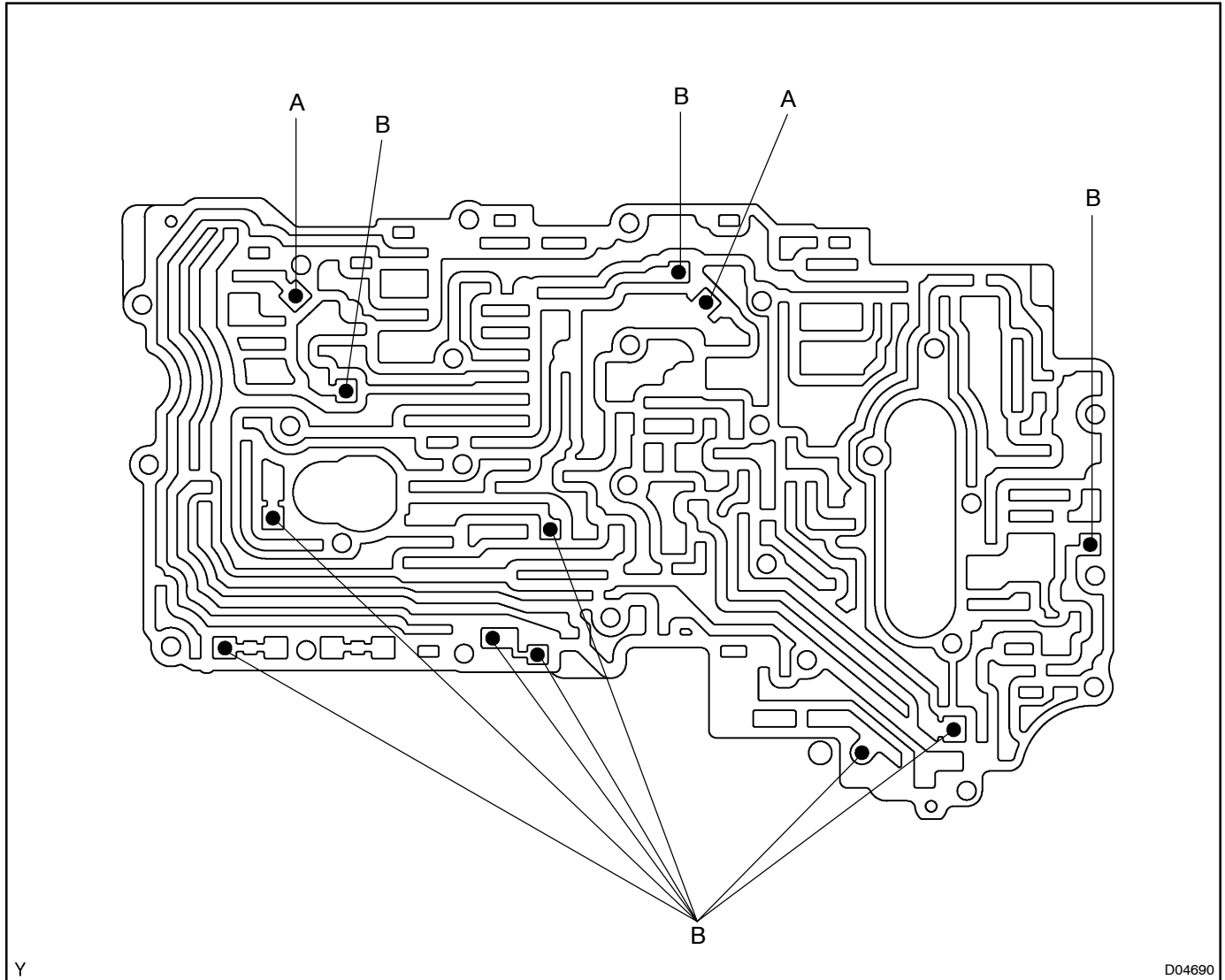
Mark	Name (Color)	Free length / Outer diameter mm (in.)	Total No. of coils
A	Lock-up relay valve (Red)	23.42 (0.922) / 5.86 (0.231)	12.25
B	Secondary regulator valve (Blue)	32.79 (1.291) / 9.40 (0.370)	12.75
C	C-1 Orifice control valve (White)	37.13 (1.462) / 11.14 (0.439)	11.25
D	C-1 Orifice control valve (None)	21.50 (0.846) / 7.76 (0.306)	11.50
E	C-1 Accumulator (Pink)	75.26 (2.963) / 15.02 (0.591)	17.06
F	2-3 Shift valve (Purple)	30.77 (1.211) / 9.70 (0.382)	10.50
G	3-4 Shift valve (Purple)	30.77 (1.211) / 9.70 (0.382)	10.50
H	Reverse control valve (None)	25.58 (1.007) / 8.64 (0.340)	8.75

RETAINER



Mark	Retainer	Height / Width / Thickness	
		mm (in.)	
A	Check valve	10.0 (0.394) / 5.0 (0.197) / 3.2 (0.126)	
B	Check valve	19.0 (0.748) / 5.0 (0.197) / 3.2 (0.126)	
C	Reverse control valve	16.0 (0.630) / 5.0 (0.197) / 3.2 (0.126)	
D	2-3 Shift valve	12.5 (0.492) / 5.0 (0.197) / 3.2 (0.126)	
E	C-1 Accumulator	37.5 (1.476) / 5.0 (0.197) / 3.2 (0.126)	
F	C-1 Orifice control valve	12.5 (0.492) / 5.0 (0.197) / 3.2 (0.126)	
G	Secondary regulator valve	10.0 (0.394) / 5.0 (0.197) / 3.2 (0.126)	
H	3-4 Shift valve	11.5 (0.453) / 5.0 (0.197) / 3.2 (0.126)	
I	Lock-up relay valve	21.2 (0.835) / 5.0 (0.197) / 3.2 (0.126)	

CHECK BALL



Mark	Check ball	Diameter mm (in.)
A	Rubber ball	6.35 (0.250)
B	Rubber ball	5.54 (0.218)