

INSPECTION PROCEDURE

HINT:

Start the inspection from step 1 in case of using the hand-held tester and start from step 3 in case of not using the hand-held tester.

1	Check output value of the steering angle sensor.
----------	---

PREPARATION:

- (a) Connect the hand-held tester to the DLC3.
- (b) Turn the ignition switch to ON and push the hand-held tester main switch to ON.
- (c) Select the DATALIST mode on the hand-held tester.
- (d) Drive the vehicle straight forward at 35 km/h (22 mph) or more for 1 second or longer.

HINT:

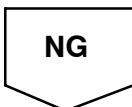
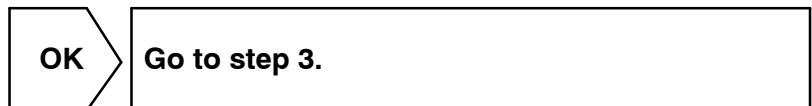
- At this time, the zero point calibration of the steering angle sensor was memorized.
- Do not stop the engine.

CHECK:

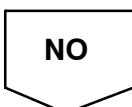
Check that the steering wheel turning angle value of the steering angle sensor displayed by the hand-held tester is changing when turning the steering wheel.

OK:

Steering wheel turning angle value must be changing.

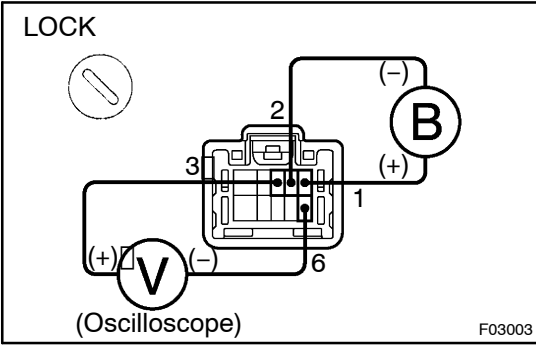


2	Replace the skid control ECU and check whether or not the trouble occurs again.
----------	--



END

3 Check steering angle sensor.



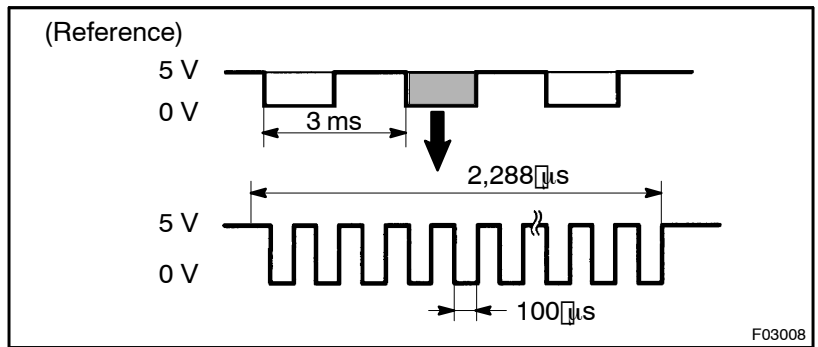
PREPARATION:

- (a) Remove the steering wheel power No. 2 and No. 3 covers, steering wheel pad, steering wheel, column upper and lower covers.
- (b) Disconnect the connector from the steering angle sensor.
- (c) Connect the oscilloscope to the terminals 3 and 6 of the combination switch connector (for steering angle sensor).
- (d) Apply battery voltage between terminals 1 and 2.

CHECK:

Turn the steering wheel slowly and check the signal waveform.

OK:



HINT:

The above signal waveform does not repeat ON and OFF regularly and this combination changes according to the data.

NG → Replace steering angle sensor.

OK

4 Check for open and short circuit in harness and connector between steering angle sensor and skid control ECU (See page N-31).

NG → Repair or replace harness or connector.

OK

Check and replace skid control ECU.