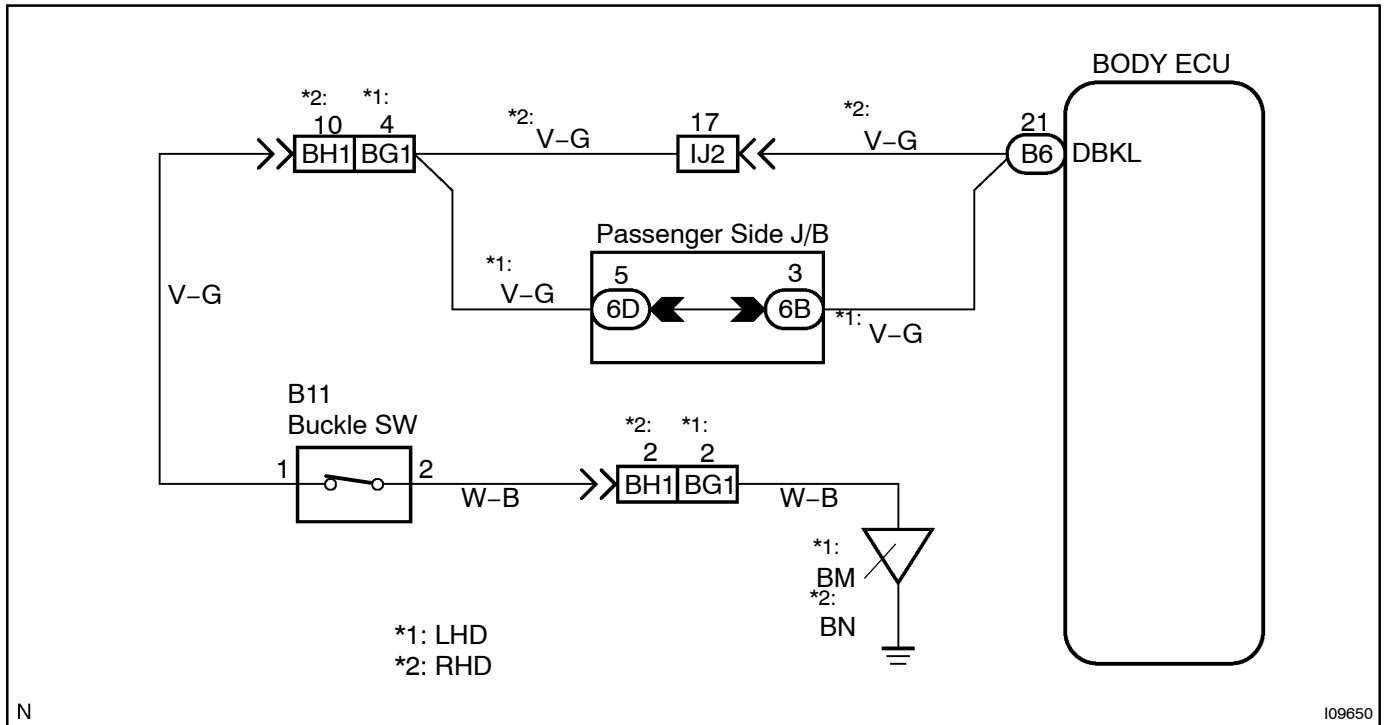


Driver buckle switch circuit

WIRING DIAGRAM



INSPECTION PROCEDURE

1 Check driver buckle switch. (See page BE-76)

NG

Replace the driver buckle switch.

OK

2 Check wireharness and connector between driver buckle switch and body ground (See page IN-30).

NG

Repair or replace wireharness or connector.

OK

Proceed to next circuit inspection shown on problem symptoms table (See page DI-488).