

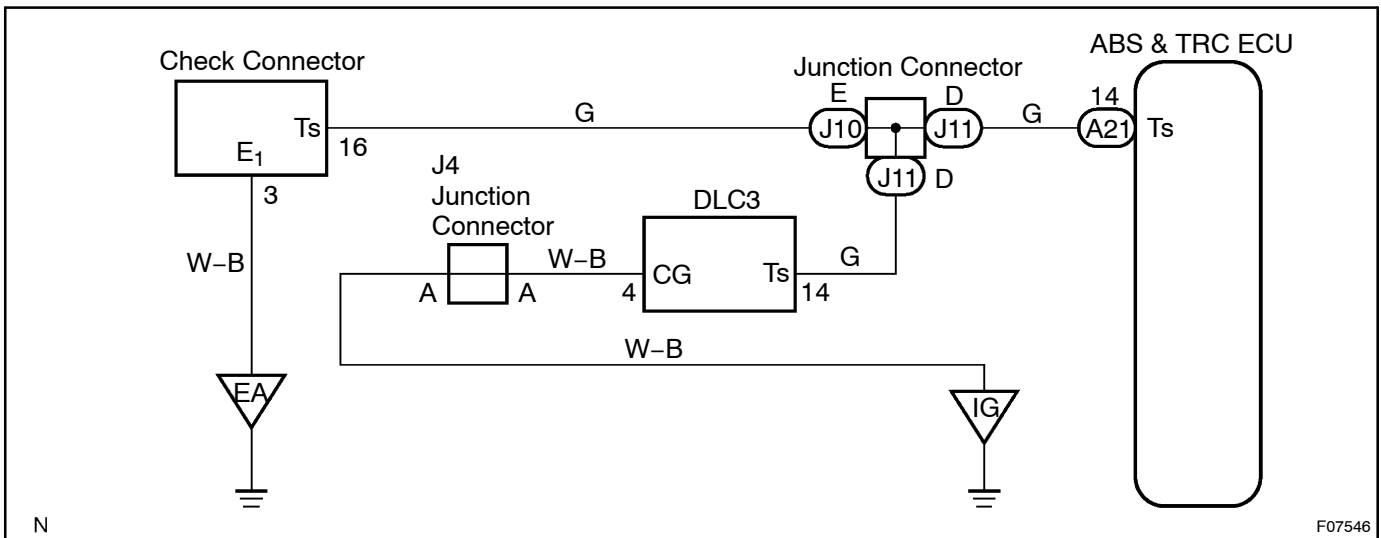
## Ts Terminal Circuit

### CIRCUIT DESCRIPTION

The sensor check circuit detects abnormalities in the speed sensor signal which cannot be detected with the DTC check.

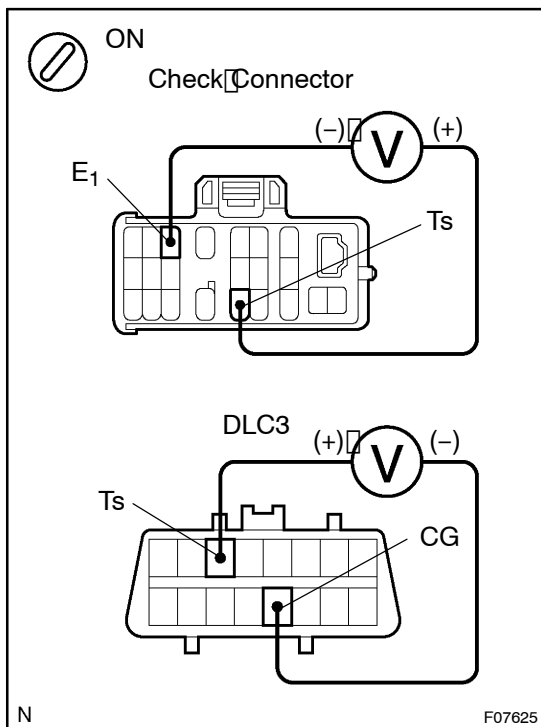
Connecting terminals Ts and E<sub>1</sub> of the check connector or Ts and CG of DLC3 in the engine compartment starts the check.

### WIRING DIAGRAM



## INSPECTION PROCEDURE

- 1 Check voltage between terminals Ts and E<sub>1</sub> of the check connector or Ts and CG of DLC3.

**CHECK:**

- (a) Turn the ignition switch ON.  
 (b) Measure voltage between terminals Ts and E<sub>1</sub> of the check connector or Ts and CG of the DLC3.

**OK:**

**Voltage: 10 - 14 V**

OK

If ABS warning light does not blink even after Ts and E<sub>1</sub> are connected, the ABS & TRC ECU may be defective.

NG

- 2 Check for open and short circuit in harness and connector between ABS & TRC ECU and check connector, check connector and body ground (See page IN-30).

NG

Repair or replace harness or connector.

OK

Check and replace ABS & TRC ECU.