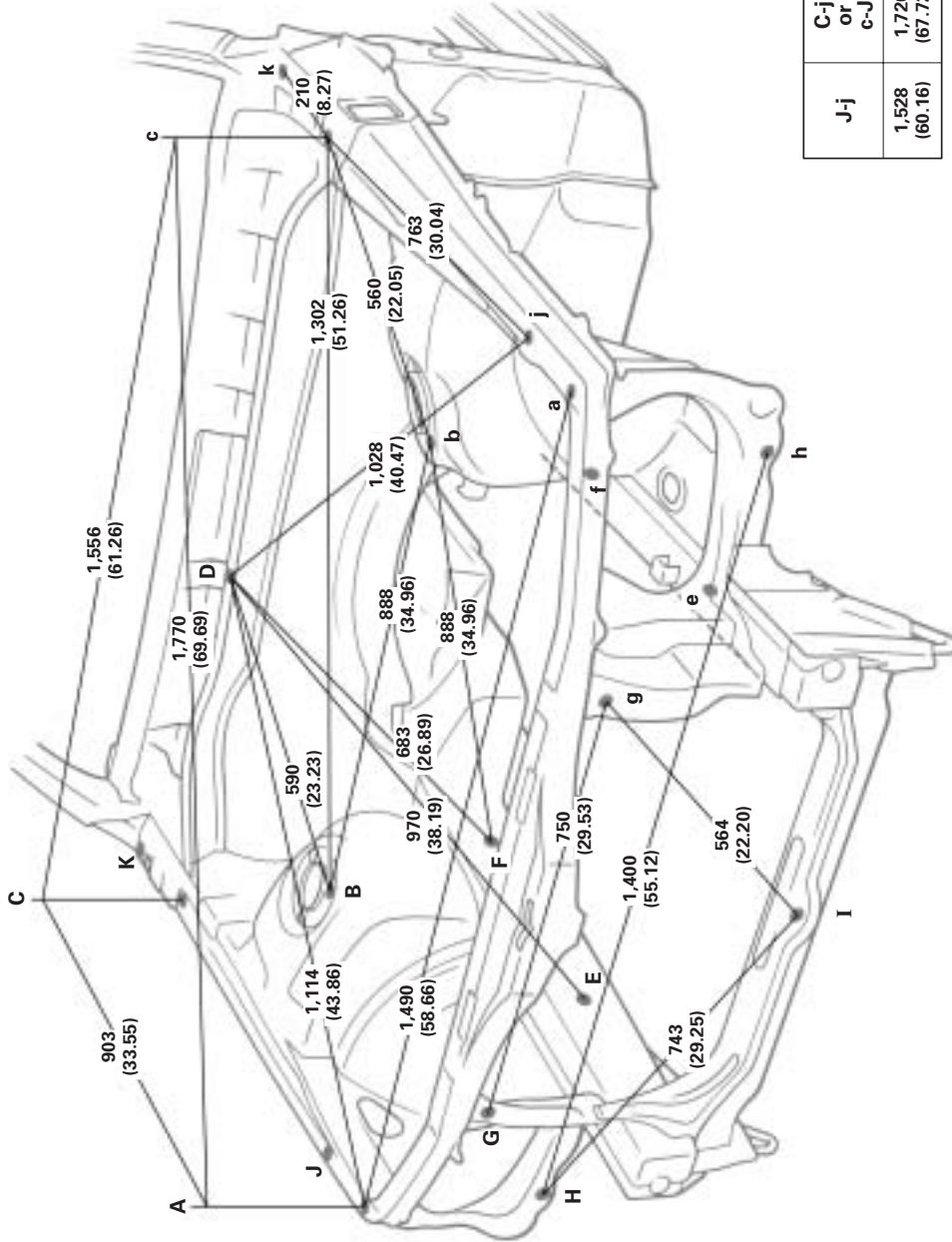


# BODY DIMENSION DRAWINGS

## ENGINE COMPARTMENT

(Three-Dimensional Distance)

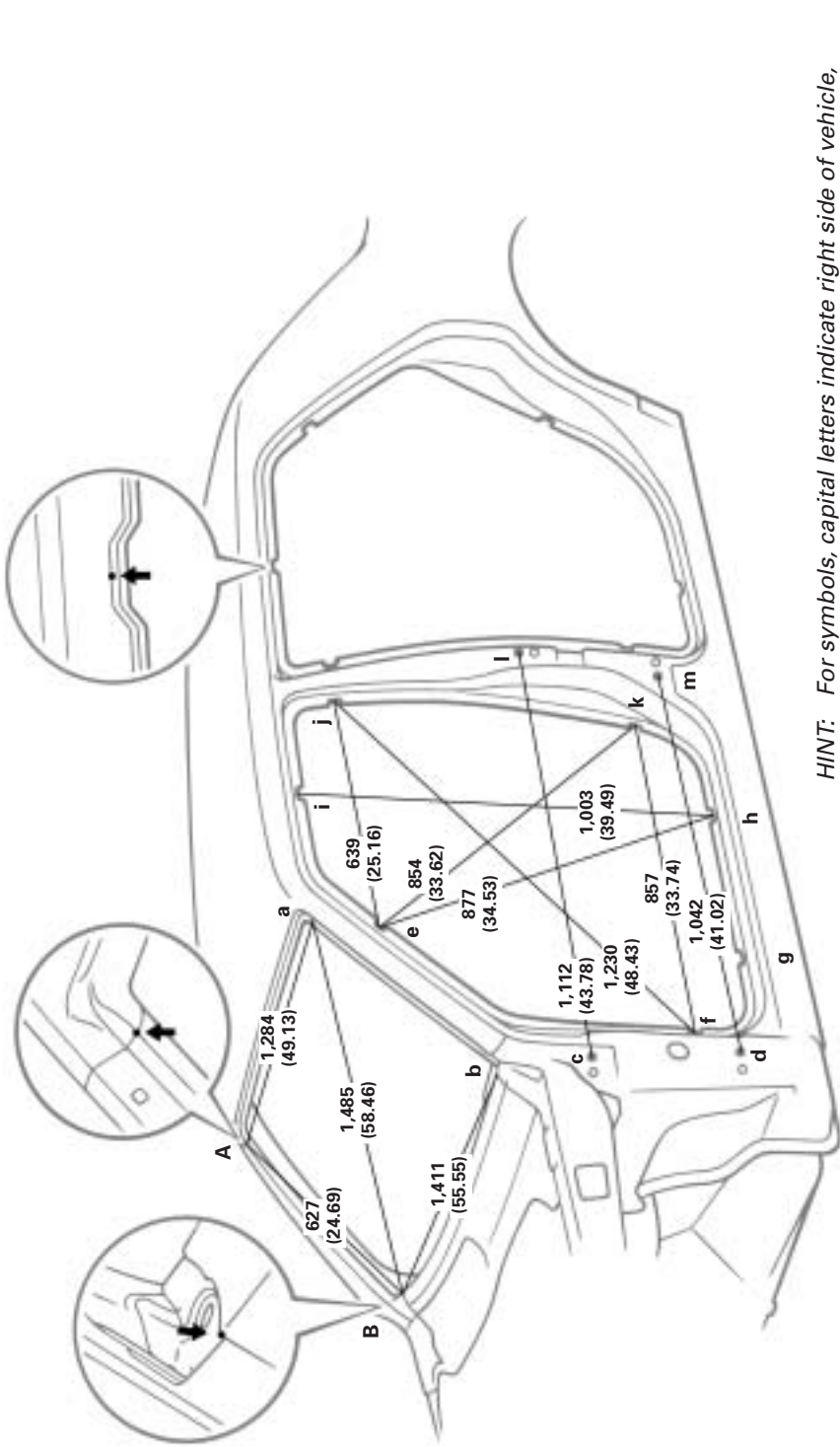


mm (in.)

Symbol	Name	Hole dia.	Symbol	Name	Hole dia.
A, a	Radiator upper support standard hole	10 (0.39)	G, g	Radiator support standard hole	7 (0.28)
B, b	Front spring support hole inner-front	13 (0.51)	H, h	Radiator support standard hole	10 (0.39)
C, c	Cowl top side panel standard hole	10 (0.39)	I	Hood lock support installation nut	6 (0.24) nut
D	Cowl top panel center mark	5 (0.20)	J, j	Front fender apron standard hole	10 (0.39)
E, e	Front side member working hole	18 (0.71)	K, k	Hood hinge installation nut	8 (0.31) nut
F, f	Front side member standard hole	13 (0.51)	—	—	—

BODY OPENING AREAS (Side View: Front)

(Three-Dimensional Distance)



HINT: For symbols, capital letters indicate right side of vehicle, small letters indicate left side of vehicle (Seen from rear).

Vehicle Dimensions Left ↔ Right

E-e	F-f	G-g	H-h	I-i	J-j	K-k
1,419 (55.87)	1,582 (62.28)	1,582 (62.28)	1,582 (62.28)	1,289 (50.75)	1,395 (54.92)	1,582 (62.28)

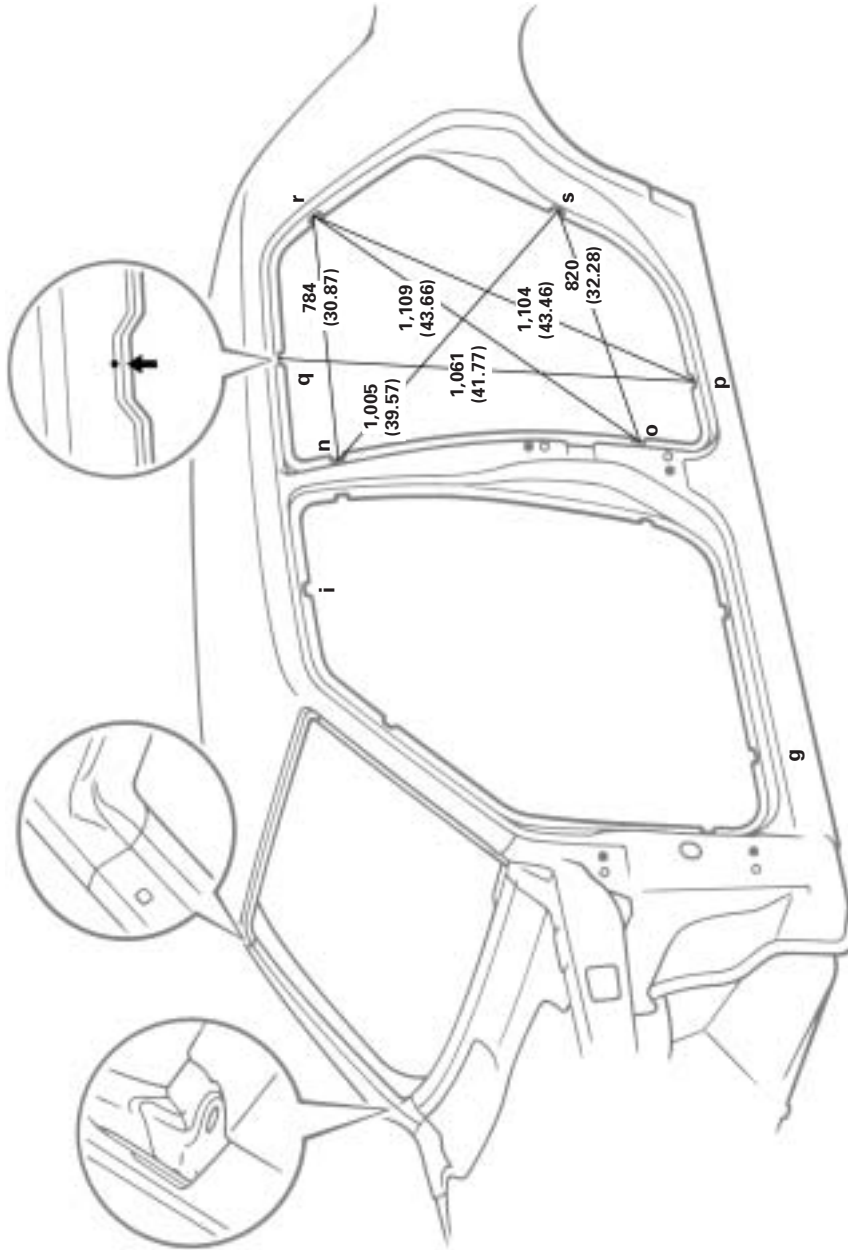
E-f or e-F	E-h or e-H	E-j or e-J	F-j or f-J	F-k or f-K	H-i or h-I	J-k or j-K
1,685 (66.34)	1,736 (68.35)	1,545 (60.83)	1,928 (75.91)	1,799 (70.83)	1,745 (68.70)	1,662 (65.43)

mm (in.)

Symbol	Name	Hole dia.	Symbol	Name	Hole dia.
A, a	Roof panel/Front body pillar adjoining portion	—	H, h	Rocker panel assembly mark	—
B, b	Cowl top panel/Front body pillar adjoining portion	—	I, i	Roof side rail assembly mark	—
C, c	Front door hinge installation nut	10 (0.51) nut	J, j	Center body pillar assembly mark	—
D, d	Front door hinge installation nut	10 (0.51) nut	K, k	Center body pillar assembly mark	—
E, e	Front body pillar assembly mark	—	L, l	Rear door hinge installation hole	13 (0.51)
F, f	Front body pillar assembly mark	—	M, m	Rear door hinge installation hole	13 (0.51)
G, g	Rocker panel assembly mark	—	—	—	—

BODY OPENING AREAS (Side View: Rear)

(Three-Dimensional Distance)



HINT: For symbols, capital letters indicate right side of vehicle, small letters indicate left side of vehicle (Seen from rear).

Vehicle Dimensions Left ↔ Right

N-n	O-o	P-p	Q-q	R-r	S-s
1,396 (54.96)	1,582 (62.28)	1,582 (62.28)	1,283 (50.51)	1,391 (54.76)	1,581 (62.24)

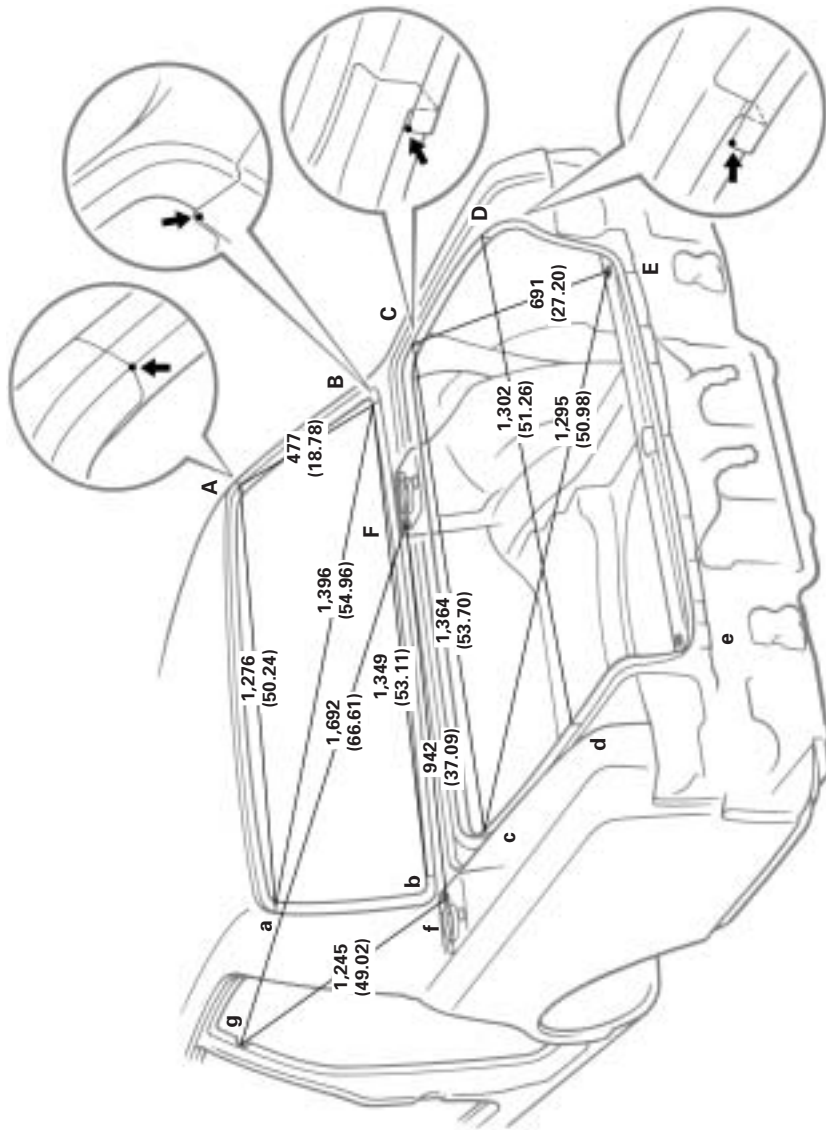
G-p or g-p	I-q or i-Q	N-r or n-R	O-s or o-S	P-q or p-Q	R-s or r-S
1,927 (75.87)	1,464 (57.64)	1,599 (62.95)	1,781 (70.12)	1,776 (69.92)	1,618 (63.70)

mm (in.)

Symbol	Name	Symbol	Name	Hole dia.
G, g	Rocker panel assembly mark	P, p	Roof side rail assembly mark	—
I, i	Roof side rail assembly mark	Q, q	Rocker panel assembly mark	—
N, n	Center body pillar assembly mark	R, r	Quarter panel assembly mark	—
O, o	Center body pillar assembly mark	S, s	Quarter panel assembly mark	—

BODY OPENING AREAS (Rear View)

(Three-Dimensional Distance)



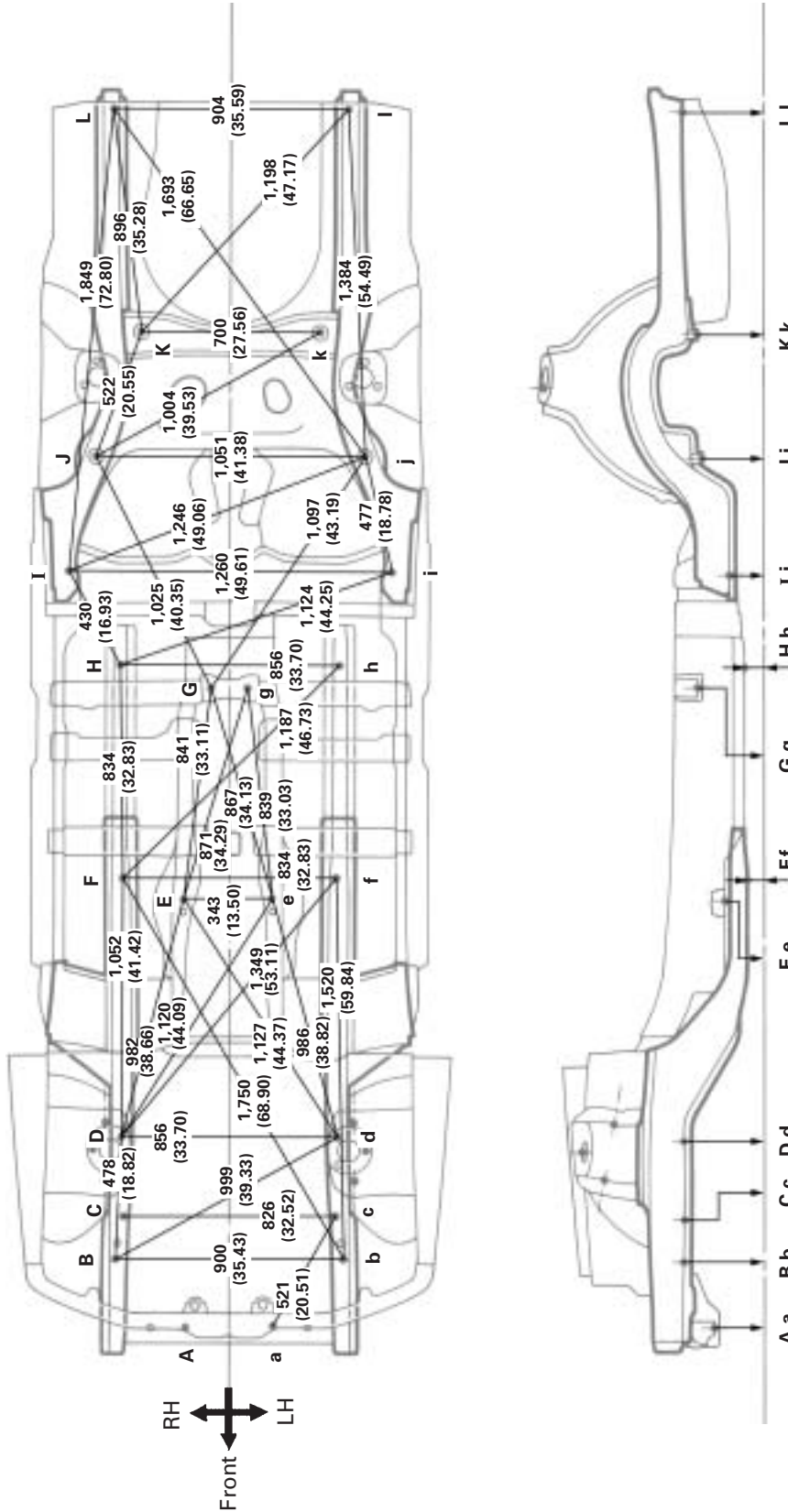
HINT: For symbols, capital letters indicate right side of vehicle, small letters indicate left side of vehicle (Seen from rear).

Symbol	Name	Hole dia.	Symbol	Name	Hole dia.
A, a	Roof panel/Quarter panel adjoining portion	—	E, e	Rear floor finish plate installation hole	8.5 (0.335)
B, b	Upper back panel/Quarter panel adjoining portion	—	F, f	Rear spring support hole-inner	13 (0.51)
C, c	Quarter panel/Upper back panel adjoining portion	—	G, g	Center body pillar assembly mark	—
D, d	Luggage opening trough/Quarter panel adjoining portion	—	—	—	—

mm (in.)

UNDER BODY

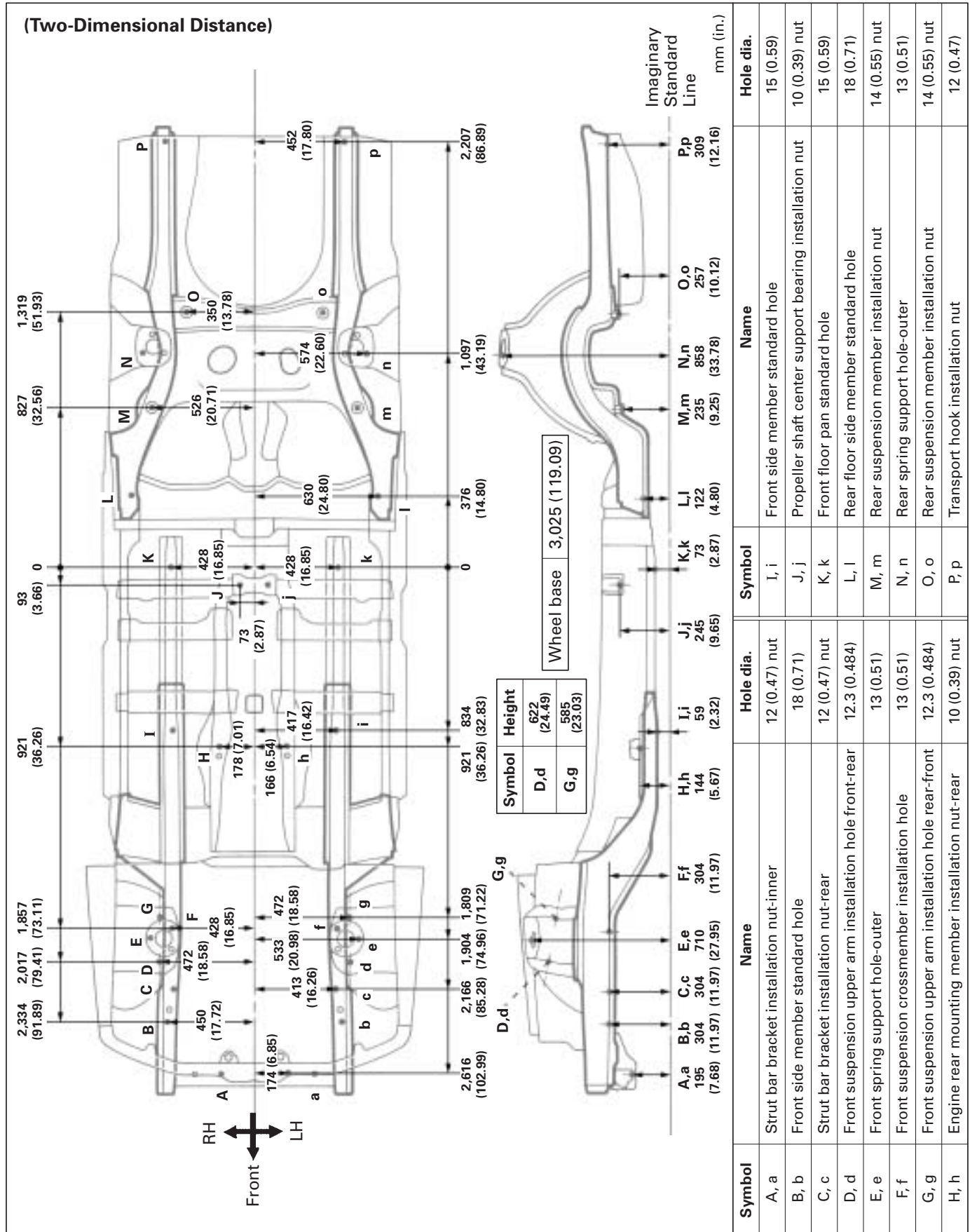
(Three-Dimensional Distance)



mm (in.)

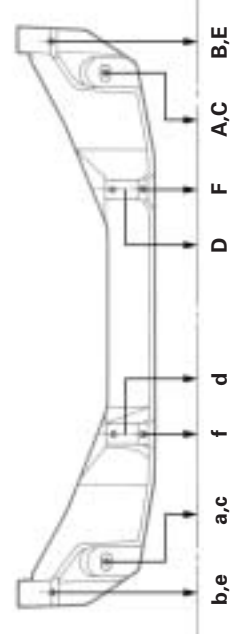
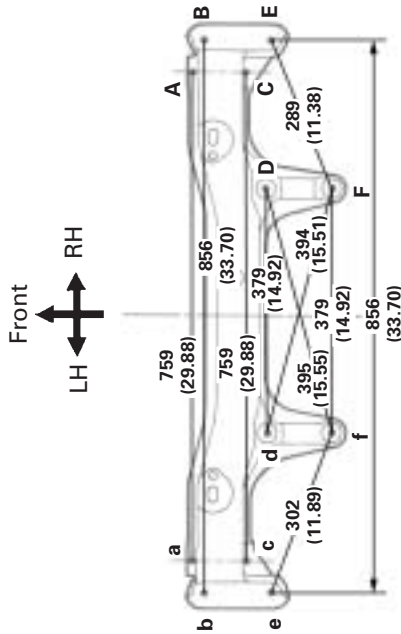
Symbol	Name	Hole dia.	Symbol	Name	Hole dia.
A, a	Strut bar bracket installation nut-inner	12 (0.47) nut	G, g	Propeller shaft center support bearing installation nut	10 (0.39) nut
B, b	Front side member standard hole	18 (0.71)	H, h	Front floor pan standard hole	15 (0.59)
C, c	Strut bar bracket installation nut-rear	12 (0.47) nut	I, i	Rear floor side member standard hole	18 (0.71)
D, d	Front suspension crossmember installation hole	13 (0.51)	J, j	Rear suspension member installation nut	14 (0.55) nut
E, e	Engine rear mounting member installation nut-rear	10 (0.39) nut	K, k	Rear suspension member installation nut	14 (0.55) nut
F, f	Front side member standard hole	15 (0.59)	L, l	Transport hook installation nut	12 (0.47) nut

UNDER BODY (Cont'd)

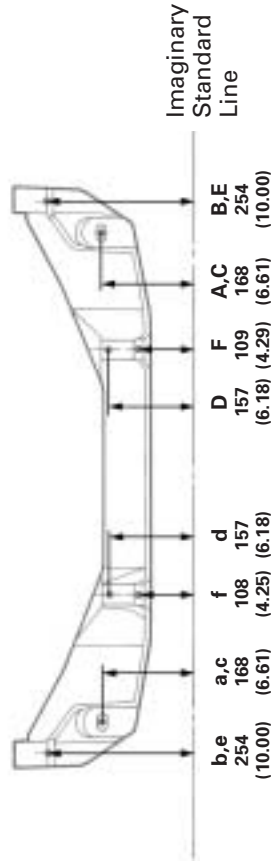
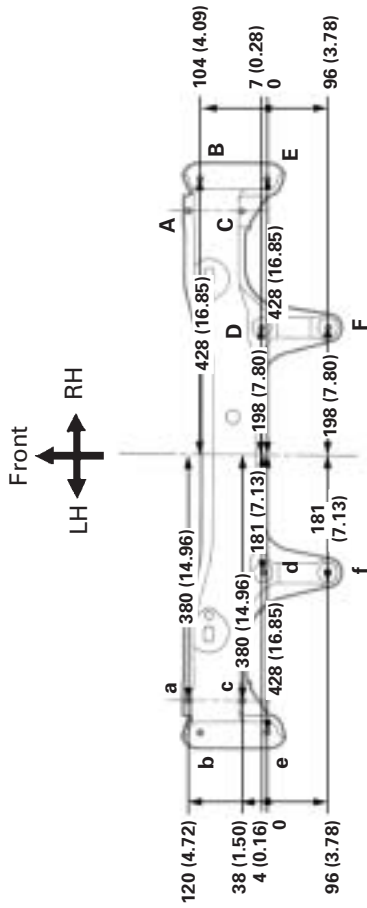


FRONT SUSPENSION CROSS MEMBER (LHD)

(Three-Dimensional Distance)



(Two-Dimensional Distance)

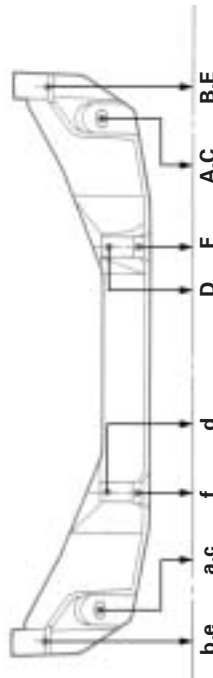
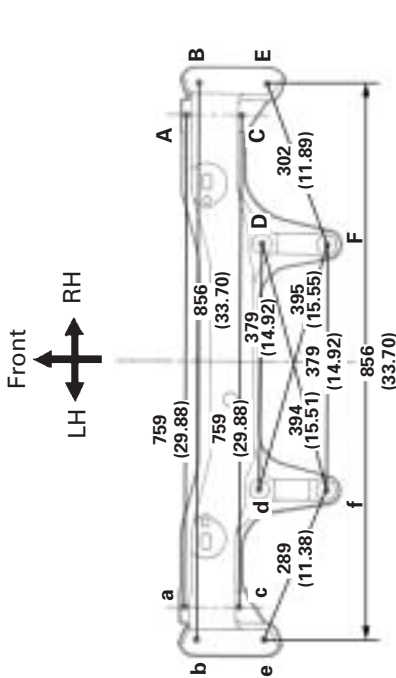


mm (in.)

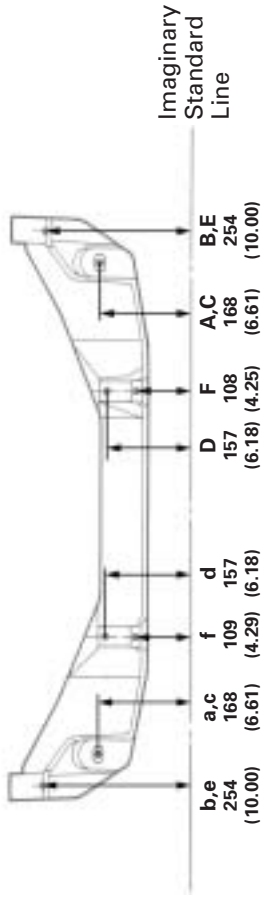
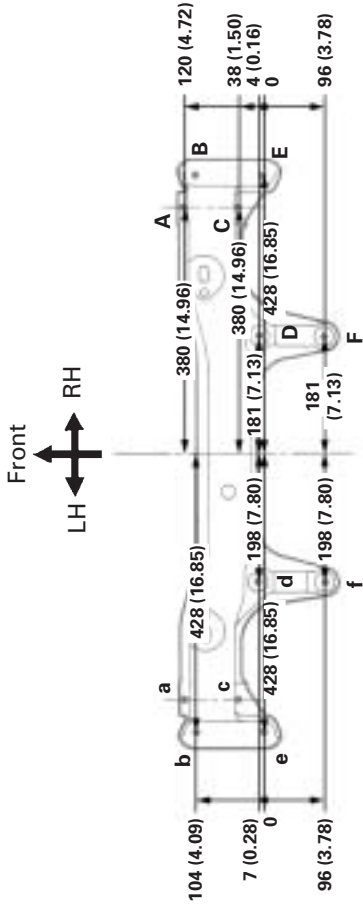
Symbol	Name	Hole dia.	Symbol	Name	Hole dia.
A, a	Lower arm installation hole-front	25x16.3 (0.98x0.642)	D, d	Steering gear box installation hole front-lower	13 (0.51)
B, b	Suspension crossmember installation hole front-lower	15 (0.59)	E, e	Suspension crossmember installation hole rear-lower	15 (0.59)
C, c	Lower arm installation hole-rear	25x16.3 (0.98x0.642)	F, f	Steering gear box installation hole rear-lower	13 (0.51)

FRONT SUSPENSION CROSSMEMBER (RHD)

(Three-Dimensional Distance)



(Two-Dimensional Distance)



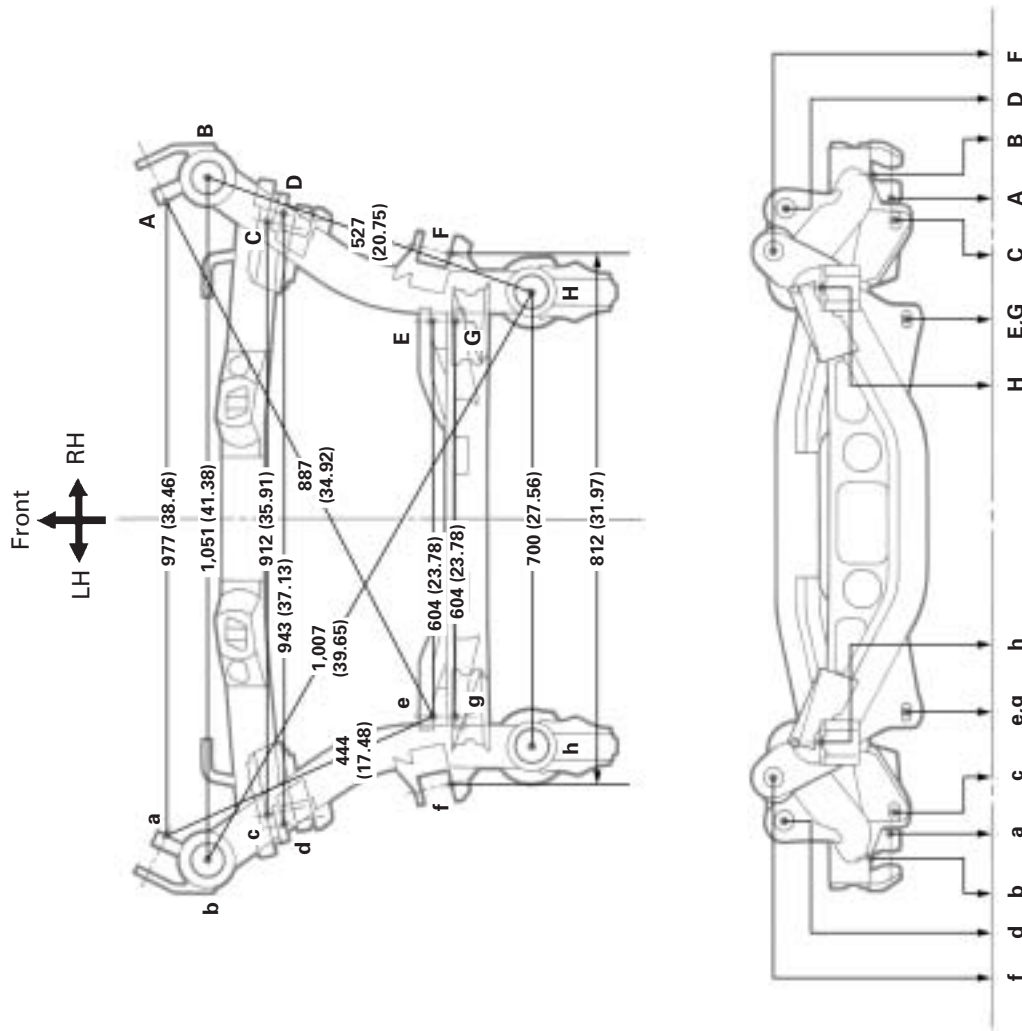
Symbol	Name	Hole dia.	Symbol	Name	Hole dia.
A, a	Lower arm installation hole-front	25 x 16.3 (0.98 x 0.642)	D, d	Steering gear box installation hole front-lower	13 (0.51)
B, b	Suspension crossmember installation hole front-lower	15 (0.59)	E, e	Suspension crossmember installation hole rear-lower	15 (0.59)
C, c	Lower arm installation hole-rear	25 x 16.3 (0.98 x 0.642)	F, f	Steering gear box installation hole rear-lower	13 (0.51)

mm (in.)



REAR SUSPENSION MEMBER

(Three-Dimensional Distance)

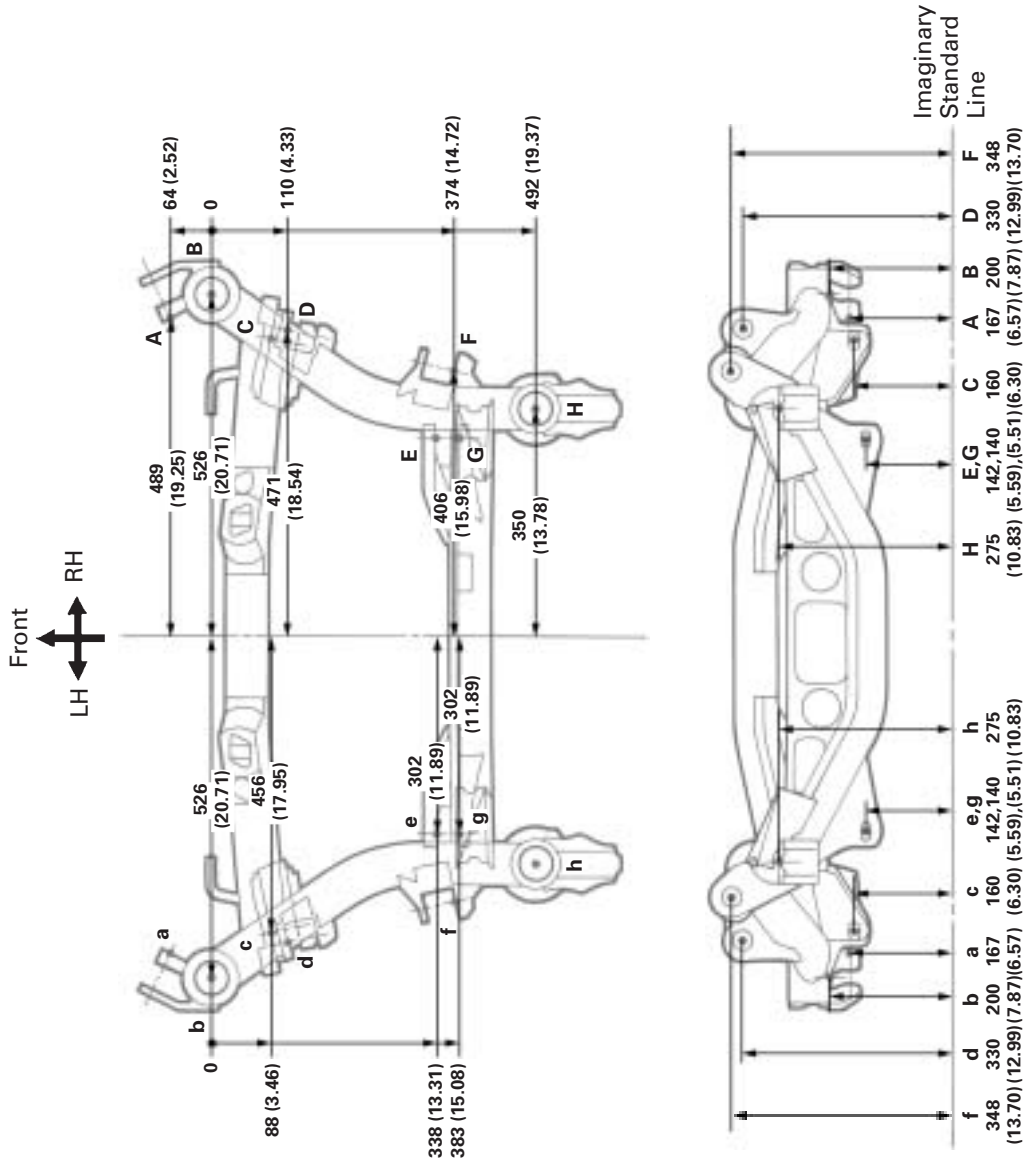


Symbol	Name	Hole dia.	Symbol	Name	Hole dia.
A, a	Strut bar installation hole-inner	12.2 (0.480)	E, e	Lower arm installation hole-front	26 x 12.2 (1.02 x 0.480)
B, b	Rear suspension member installation hole	52 (2.05)	F, f	Upper arm installation hole-rear	14.2 (0.559)
C, c	Lower arm installation hole-front	26 x 12.2 (1.02 x 0.480)	G, g	Lower arm installation hole-rear	26 x 12.2 (1.02 x 0.480)
D, d	Upper arm installation hole-front	14.2 (0.559)	H, h	Rear suspension member installation hole	50 (1.97)

mm (in.)

REAR SUSPENSION MEMBER (Cont'd)

(Two-Dimensional Distance)



Symbol	Name	Hole dia.	Symbol	Name	Hole dia.
A, a	Strut bar installation hole-inner	12.2 (0.480)	E, e	Lower arm installation hole-front	26 x 12.2 (1.02 x 0.480)
B, b	Rear suspension member installation hole	52 (2.05)	F, f	Upper arm installation hole-rear	14.2 (0.559)
C, c	Lower arm installation hole-front	26 x 12.2 (1.02 x 0.480)	G, g	Lower arm installation hole-rear	26 x 12.2 (1.02 x 0.480)
D, d	Upper arm installation hole-front	14.2 (0.559)	H, h	Rear suspension member installation hole	50 (1.97)

mm (in.)