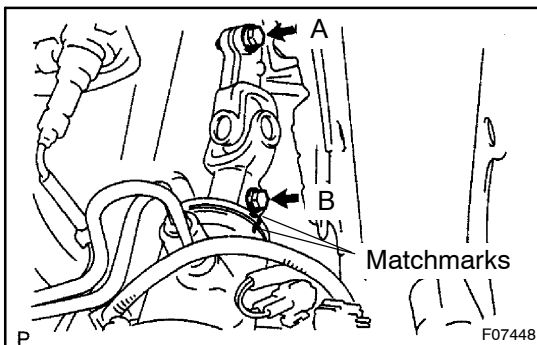
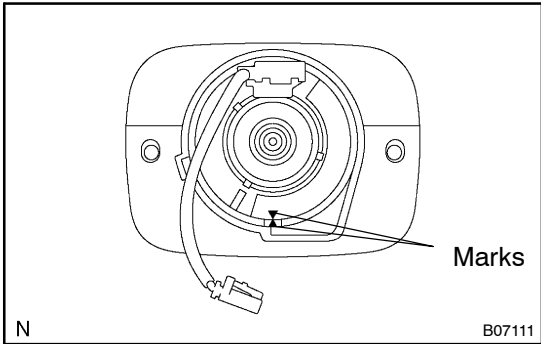


INSTALLATION

1. **INSTALL NO. 2 INTERMEDIATE SHAFT ASSEMBLY**
 - (a) Align the matchmarks on the No. 2 intermediate shaft assembly and main shaft.
 - (b) Install the No. 2 intermediate shaft assembly with the bolt.
Torque: 35 N·m (360 kgf·cm, 26 ft·lbf)
2. **INSTALL SLIDING YOKE AND NO. 2 COLUMN HOLE COVER SUB-ASSEMBLY**
 - (a) Install the No. 2 column hole cover sub-assembly.
 - (b) Temporarily install the sliding yoke with the bolt A.
3. **INSTALL STEERING COLUMN ASSEMBLY**
 - (a) Install the steering column assembly with the 4 nuts.
Torque: 25 N·m (260 kgf·cm, 19 ft·lbf)
 - (b) Connect the connectors.
4. **LHD:**
INSTALL INSTRUMENT PANEL (See page BO-105)



5. **CONNECT SLIDING YOKE**
 - (a) Align the matchmarks on the sliding yoke and control valve shaft.
 - (b) Torque the bolt A.
Torque: 35 N·m (360 kgf·cm, 26 ft·lbf)
 - (c) Install the bolt B.
Torque: 35 N·m (360 kgf·cm, 26 ft·lbf)
6. **INSTALL NO. 2 HEATER TO REGISTER DUCT**
7. **INSTALL SPIRAL CABLE (See page BE-23)**
8. **INSTALL COMBINATION SWITCH WITH SPIRAL CABLE**
 - (a) Install the combination switch with the 3 screws.
 - (b) Connect the airbag connector.
 - (c) Connect the connectors.
9. **INSTALL COLUMN UPPER AND LOWER COVERS**
 - (a) Install the column upper cover.
 - (b) Install the column lower cover with the 3 screws.
10. **INSTALL NO. 1 INSTRUMENT PANEL SAFETY PAD**
 - (a) Connect the connectors.
 - (b) **RHD:**
Install the No. 1 instrument panel safety pad with the 3 screws.
 - (c) **LHD:**
Install the No. 1 instrument panel safety pad with the 3 bolts.
 - (d) Install the hood lock release lever with the 2 screws.
11. **INSTALL NO. 1 INSTRUMENT PANEL UNDER COVER**
 - (a) Connect the connectors.
 - (b) Install the No. 1 instrument panel under cover with the 2 screws.



12. CENTER SPIRAL CABLE

- (a) Check that the front wheels are facing straight ahead.
- (b) Turn the cable counterclockwise by hand until it becomes harder to turn.
- (c) Then rotate the cable clockwise about 2.5 turns to align the marks.

HINT:

The cable will rotate about 2.5 turns to either left or right of the center.

13. INSTALL STEERING WHEEL

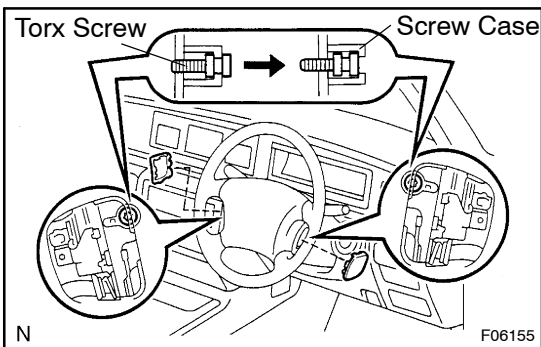
- (a) Align the matchmarks on the steering wheel and main shaft assembly.
- (b) Install the steering wheel set nut.
Torque: 35 N·m (360 kgf·cm, 26 ft·lbf)
- (c) Connect the connector.

14. INSTALL STEERING WHEEL PAD

NOTICE:

- **Never use airbag parts from another vehicle. When replacing parts, replace with new ones.**
- **Make sure the wheel pad is installed with the specified torque.**
- **If the wheel pad has been dropped, or there are cracks, dents or other defects on the case or connector, replace the wheel pad with a new one.**
- **When installing the wheel pad, take care that the wirings do not interfere with other parts and that they are not pinched between other parts.**

- (a) Connect the airbag connector.



- (b) Install the steering wheel pad after confirming that the circumference groove of the torx screws is caught on the screw case.

- (c) Using a torx socket wrench, torque the 2 screws.

Torque: 8.8 N·m (90 kgf·cm, 78 in·lbf)

- (d) Install the No. 2 and No. 3 steering wheel lower covers.

15. CHECK STEERING WHEEL CENTER POINT