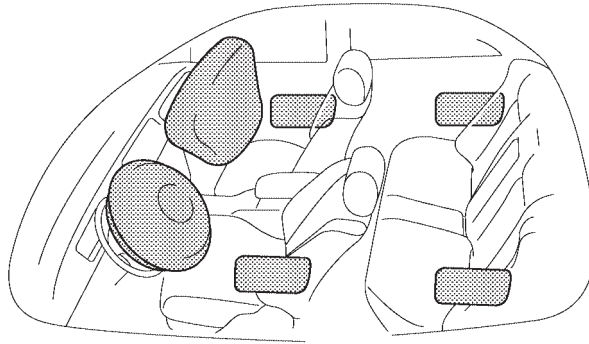


SRS AIRBAGS

All models are provided with electric type SRS airbags for the driver and front passenger, and SRS side airbags for the 4 front and rear seats, as standard equipment.

To supplement the occupant protection function of the seat belts, the SRS airbags reduce the impact that is applied to the occupant's head and chest areas, thus reducing the risk of serious injury.

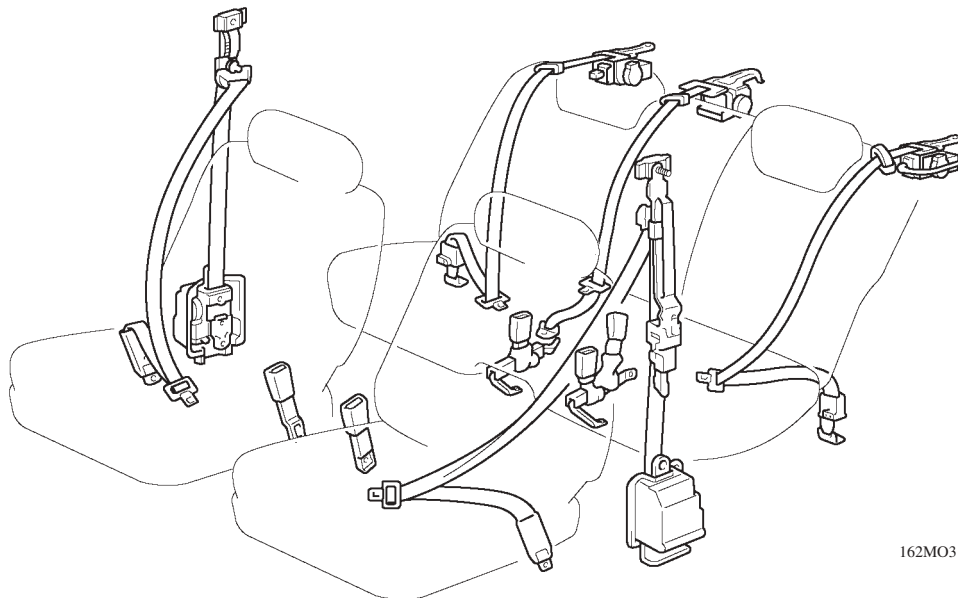


162MO30

MO

SEAT BELTS

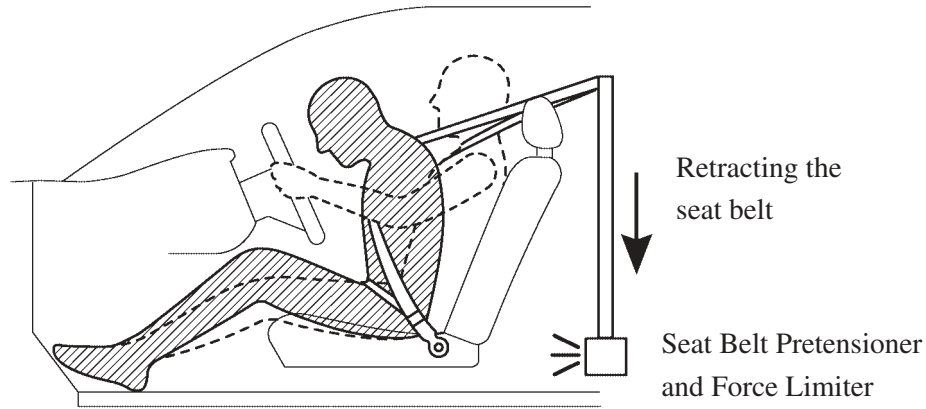
- ❶ A 3-point ELR seat belt with an electric pretensioner and force limiter is provided for the driver and front passenger seats as standard equipment on all models.
- ❷ A power adjustable shoulder anchor is provided for the driver and front passenger seats as standard equipment. The position of the shoulder belt anchor can be adjusted steplessly in the vertical direction.
- ❸ A 3-point ELR seat belt is provided on all the rear seats as standard equipment.



162MO31

SEAT BELT PRETENSIONER & FORCE LIMITER

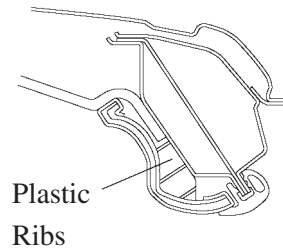
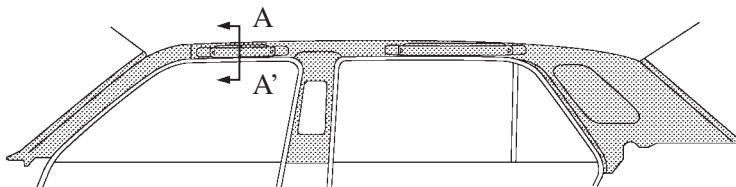
The pretensioner mechanism realizes an excellent restraint performance of the seat belt by instantly retracting the seat belt to take up the slack during a frontal collision. Thereafter, when the load that is applied to the seat belt reaches a prescribed value, the force limiter maintains the load at the prescribed value in order to dampen the impact that is applied to the occupant's chest.



162MO32

HEAD IMPACT ABSORBING STRUCTURE

A head impact absorbing structure consisting of plastic ribs has been adopted. In the event of a collision, if a secondary collision involving the occupant's head against the front pillar, center pillar, or the roof side rail occurs as a reaction to the collision, this structure dampens the impact.



A-A' Cross Section

162MO33