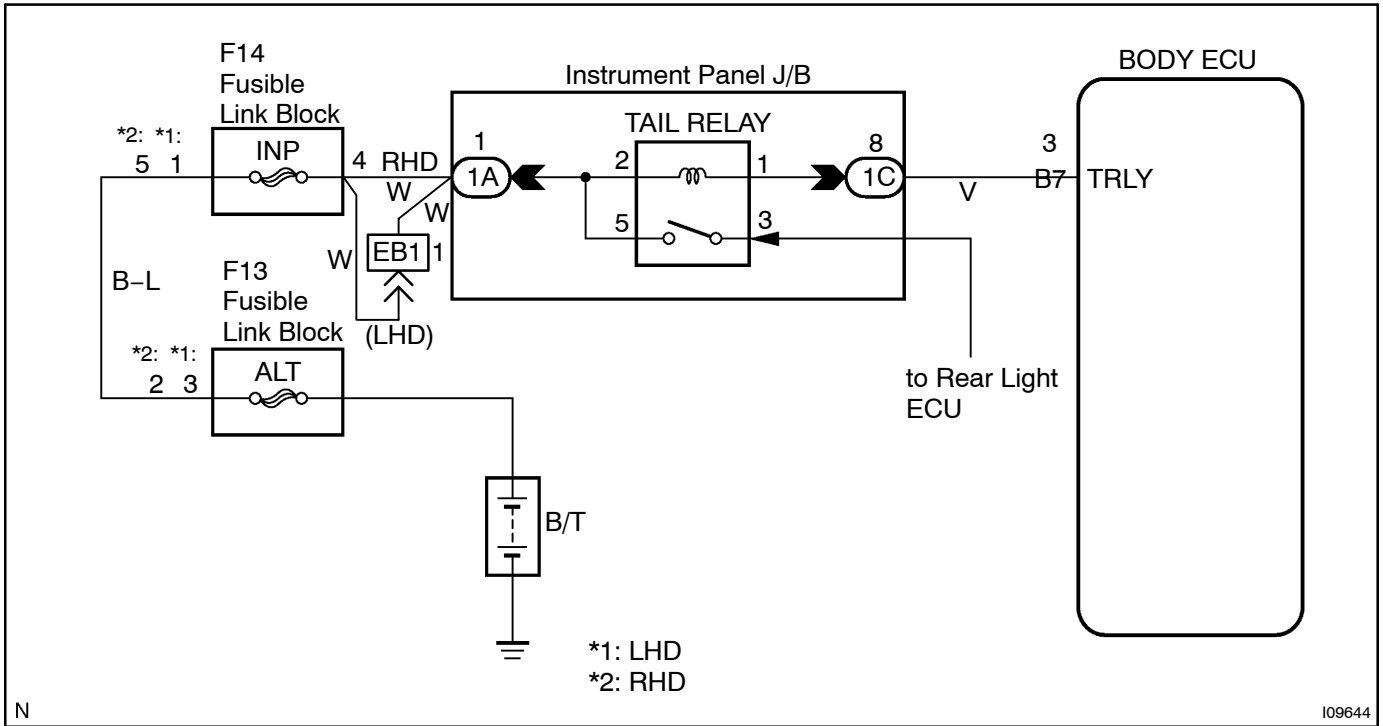


Taillight relay circuit

CIRCUIT DESCRIPTION

Taillight relay will be "ON" by operating the taillight switch. The transistor which activates the tail light relay has two sorts: one activates by the tail light switch for fail safe and the other activates by CPU.

WIRING DIAGRAM



N

109644

INSPECTION PROCEDURE

HINT:

In case of using the hand-held tester, start the inspection from step 1 and in case of not using the hand-held tester, start from step 2.

1 Check taillight relay using hand-held tester.

PREPARATION:

Connect the hand-held tester to the DLC3.

CHECK:

Check that the taillight relay can operate in an ACTIVE TEST.

OK

Proceed to next circuit inspection shown on problem symptoms table. (See page DI-488)

NG

2 Check taillight relay (See page BE-28).

NG

Replace the taillight relay.

OK

3 Check wireharness and connector between taillight relay and Body ECU, battery and taillight relay (See page IN-30).

NG

Repair or replace wireharness or connector.

OK

Proceed to next circuit inspection shown on problem symptoms table (See page DI-488).