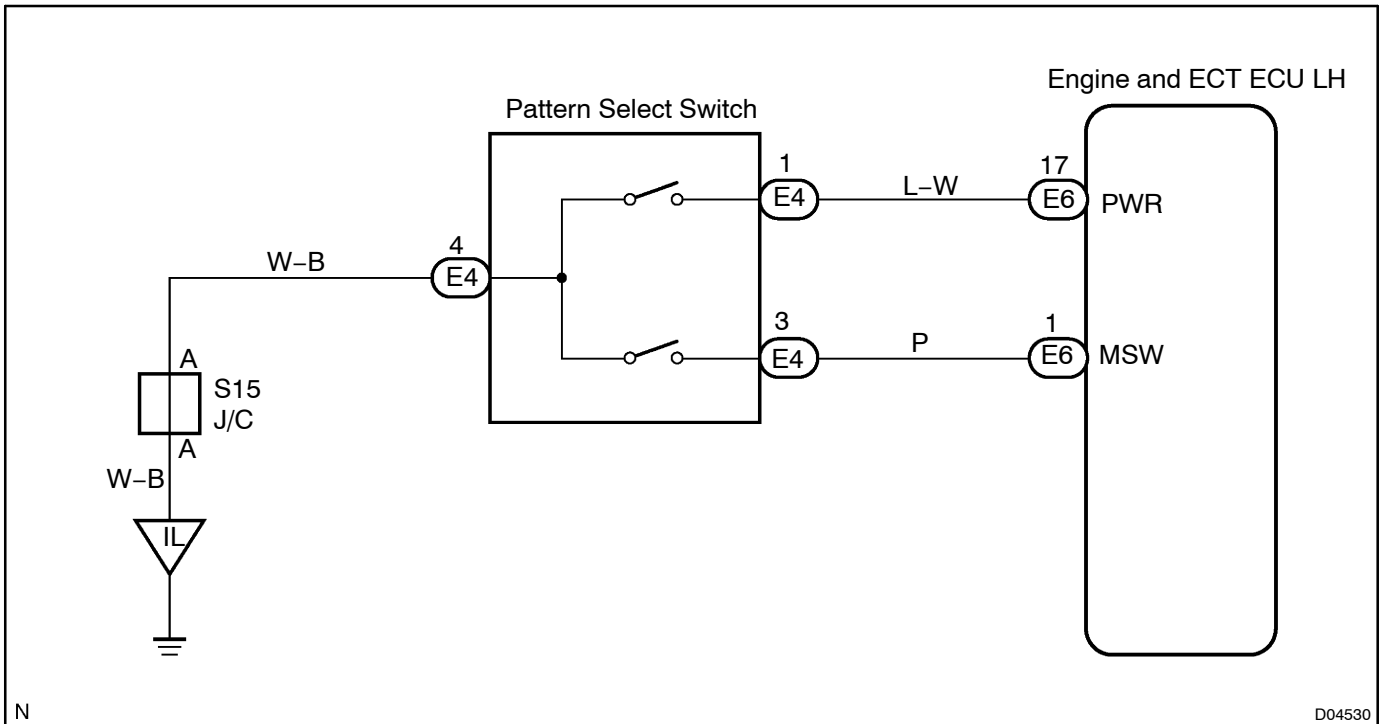


Pattern Select Switch Circuit

CIRCUIT DESCRIPTION

The Engine and ECT ECU memory contains the shift programs for the NORMAL, POWER and SNOW patterns, 2 range, L range and the lock-up patterns. By following the programs corresponding to the signals from the pattern select switch, the neutral start switch and other various sensors, the Engine and ECT ECU switches the solenoid valves ON and OFF, and controls the transmission gear change and the lock-up clutch operation.

WIRING DIAGRAM



N

D04530

INSPECTION PROCEDURE

1 Check PATTERN SEL SW signal.

When using hand-held tester:

PREPARATION:

- Remove the DLC3 cover.
- Connect a hand-held tester to the DLC3.
- Turn the ignition switch ON and hand-held tester main switch ON.

CHECK:

Read the PATTERN SEL SW signal on the hand-held tester.

OK:

Pattern select switch	PATTERN SEL SW signal
POWER	ON
NORM / SNOW	OFF

When not using hand-held tester:

PREPARATION:

Turn the ignition switch ON.

CHECK:

Measure voltage between each of terminals PWR and MSW of Engine and ECT ECU and body ground when the pattern select switch is set to the PWR (POWER), NORM (NORMAL) and SNOW positions.

OK:

Switch position	Tester connection	Specified condition
PWR	PWR - Body ground	Below 1.5 V
	MSW - Body ground	9 - 14 V
NORM	PWR - Body ground	9 - 14 V
	MSW - Body ground	9 - 14 V
SNOW	PWR - Body ground	9 - 14 V
	MSW - Body ground	Below 1.5 V

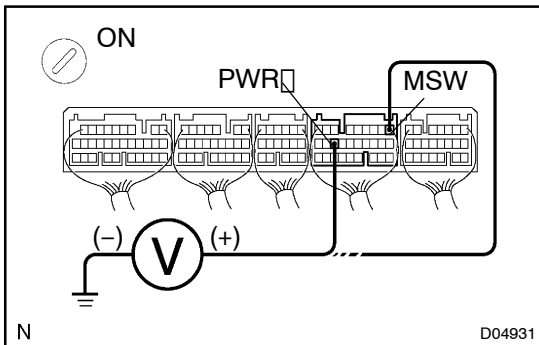
HINT:

The Engine and ECT ECU uses the normal pattern signal if the PWR and MSW signals are not input.

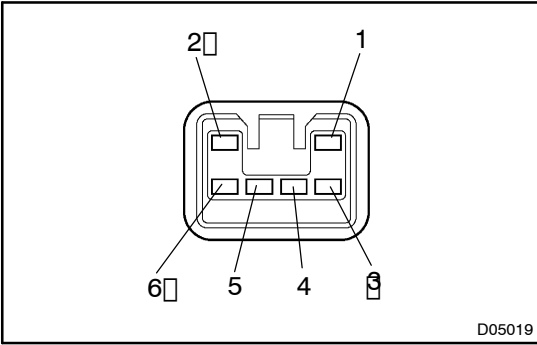
OK

Proceed to next circuit inspection shown in problem symptoms table (See page DI-19).

NG



2 Check pattern select switch.



PREPARATION:

Disconnect the pattern select switch connector.

CHECK:

Check continuity between each terminal of pattern select switch connector when the select switch is set to PWR and NORM positions.

OK:

Switch position	Tester connection	Specified condition
PWR	1 - 4	Continuity
NORM	1 - 4, 3 - 4	No continuity
SNOW	3 - 4	Continuity

NG Replace the pattern select switch.

OK

3 Check harness and connector between battery and pattern select switch, pattern select switch and Engine and ECT ECU (See page N-30).

NG Repair or replace the harness or connector.

OK

Check and replace the Engine and ECT ECU (See page N-30).