

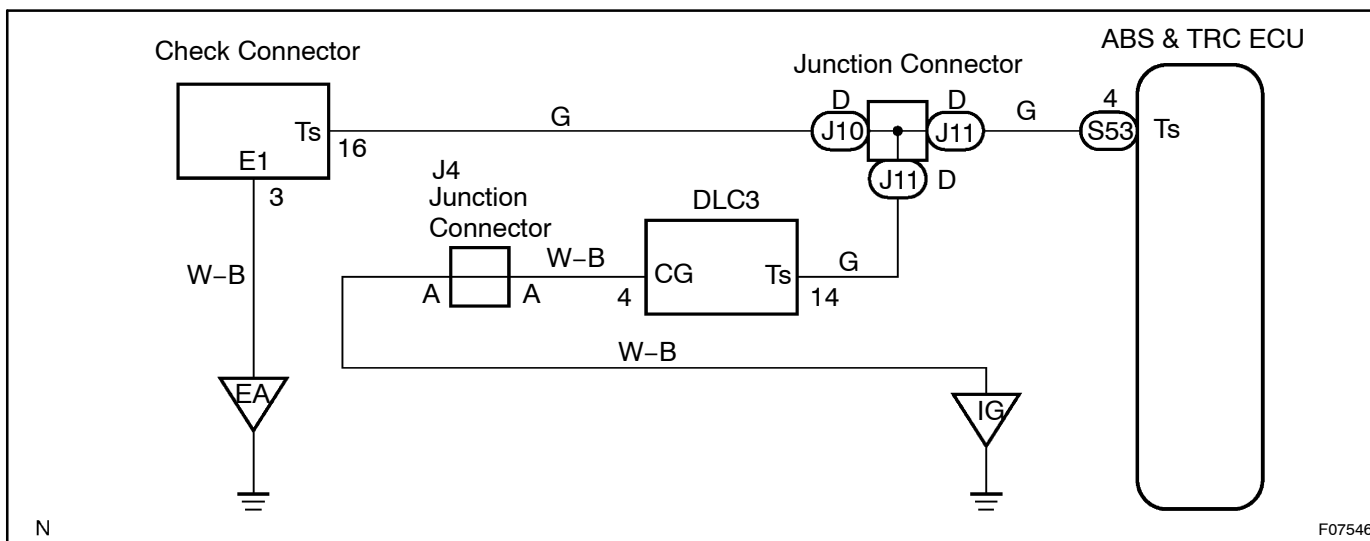
# Ts Terminal Circuit

## CIRCUIT DESCRIPTION

In the sensor check mode, a malfunction of the speed sensor that cannot be judged when the vehicle is stopped is judged while driving.

Transition to the sensor check mode can be performed by connecting terminals Ts and CG of the DLC3 and turning the ignition switch from OFF to ON.

## WIRING DIAGRAM

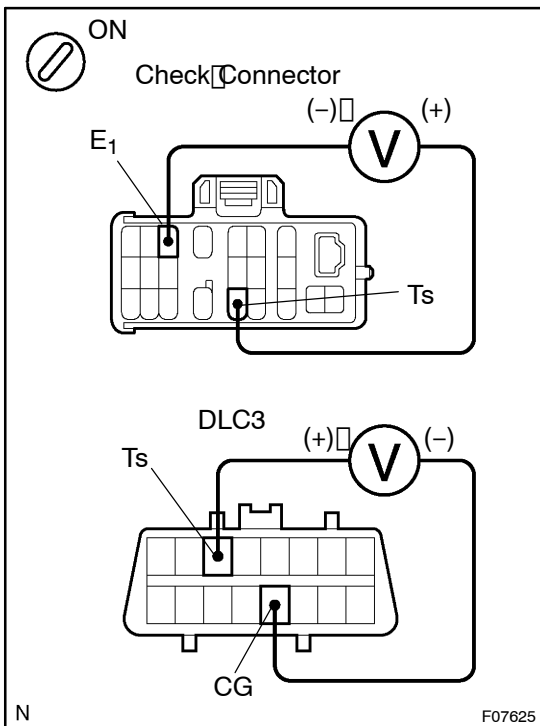


N

F07546

## INSPECTION PROCEDURE

## 1 Check voltage between terminals Ts and CG of DLC3.

**CHECK:**

- (a) Turn the ignition switch to ON.
- (b) Measure voltage between terminals Ts and E<sub>1</sub> of check connector or Ts and CG of DLC3.

**OK:**

**Voltage: 10 - 14 V**

OK

If ABS warning light does not blink even after Ts and CG have been connected, the ECU may be defective.

NG

## 2 Check for open and short circuit in harness and connector between skid control ECU and DLC3, DLC3 and body ground (See page IN-31).

NG

Repair or replace harness or connector.

OK

Check and replace skid control ECU.