

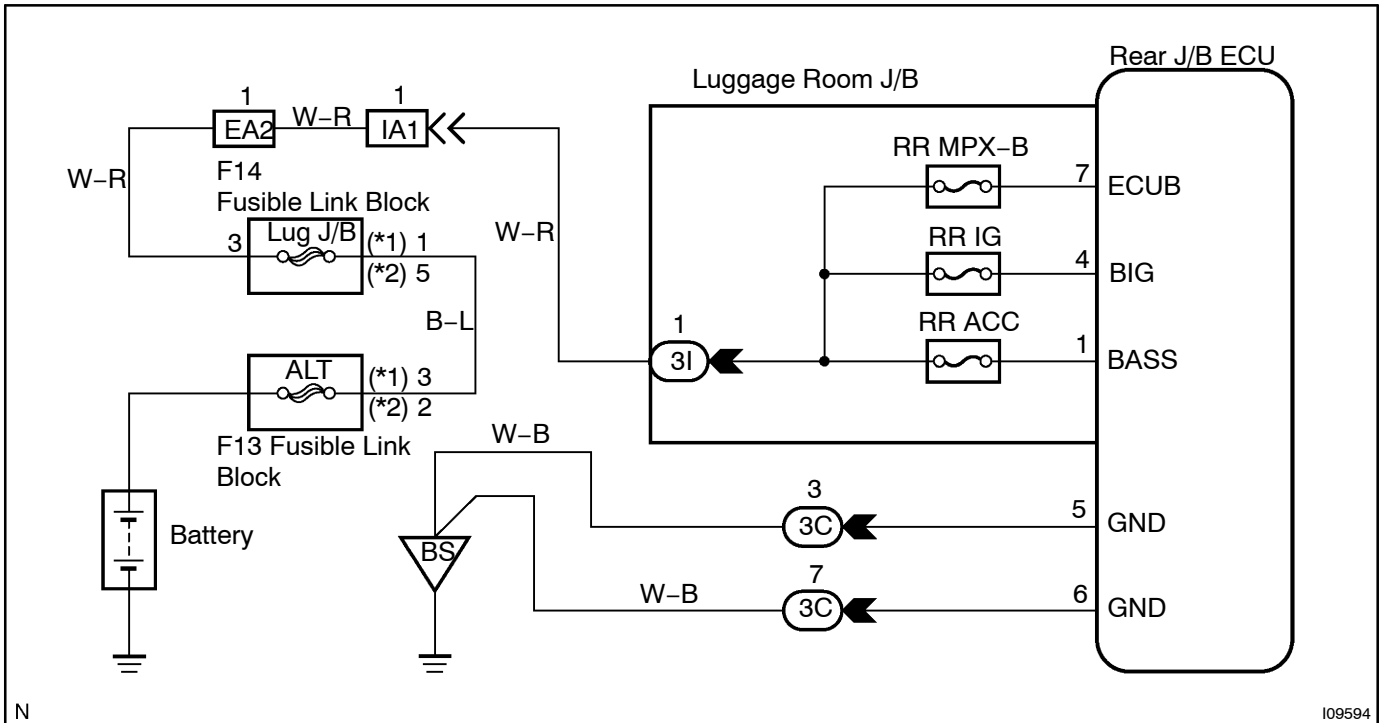
CIRCUIT INSPECTION

Power source circuit

CIRCUIT DESCRIPTION

This circuit provides power to operate the rear J/B ECU.

WIRING DIAGRAM



INSPECTION PROCEDURE

- 1 Check RR ACC, RR IG, RR MPX-B and FUEL OPN fuse.

CHECK:

Check continuity of RR ACC, RR IG, RR MPX-B, and FUEL OPN fuse.

OK:

Continuity

NG

Replace the failure fuse.

OK

2 Check voltage between terminals BASS, BIG, ECU-B, and FUEL and GND of rear J/B ECU connector.

PREPARATION:

Disconnect the rear J/B ECU connector.

CHECK:

Measure voltage between terminals BASS, BIG, ECU-B and FUEL

OK:

Voltage: 10 – 14V

OK

Proceed to next circuit inspection shown on problem/symptom table (See page DI-665).

NG

3 Check wireharness and connector between rear J/B ECU and body ground (See page N-30).

NG

Repair or replace wireharness or connector.

OK

Check and repair wireharness and connector between rear J/B ECU and battery (See page N-30).