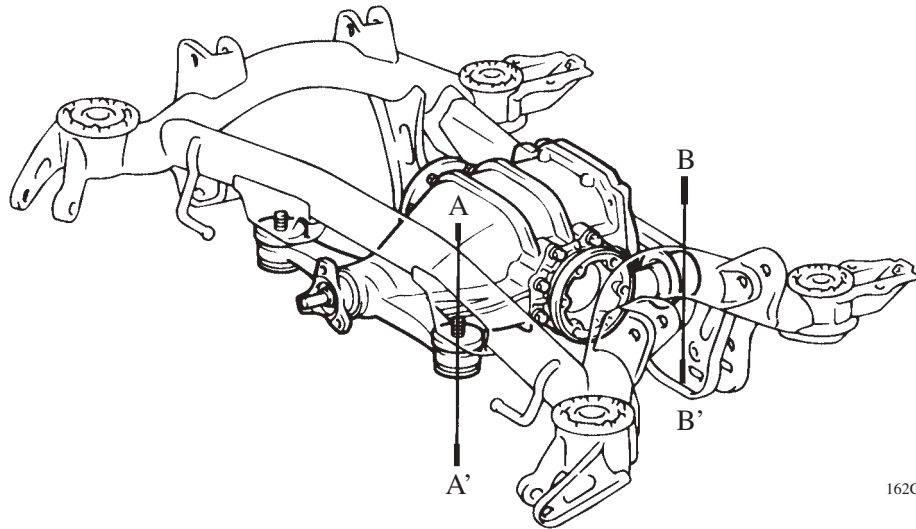


■ DIFFERENTIAL SUPPORT

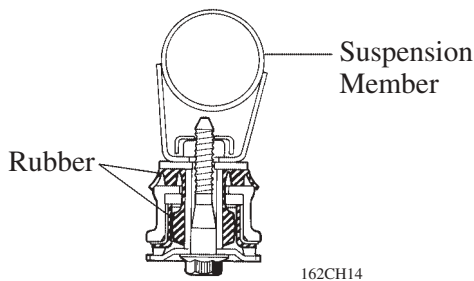
A 4-point support, which uses rubber mounts to mount the differential to the rear suspension member, has been adopted to achieve a low vibration and low noise construction.



162CH13

CH

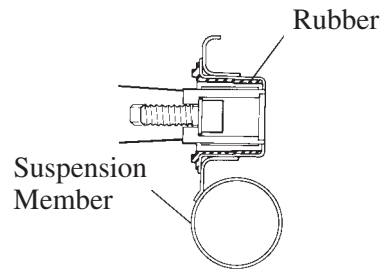
► Front Side Mount ◀



162CH14

A – A' Cross Section

► Rear Side Mount ◀



162CH15

B – B' Cross Section