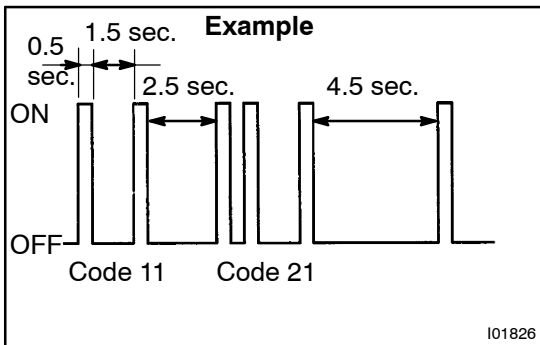


PRE-CHECK

1. TRANSPONDER KEY ECU INPUT CONDITION DISPLAY READ CODE

- (a) Connect the positive (+) lead from the volt meter (Analog Type) to OP3 of the check connector and the negative (-) lead to E1 of the check connector.



- (b) Insert the ignition key in the key cylinder.
 (c) Read the code from the movement of the tester needle.
 If no code is output, turn the ignition switch ON.
 If a code is now output, check if the DOME fuse is blown.

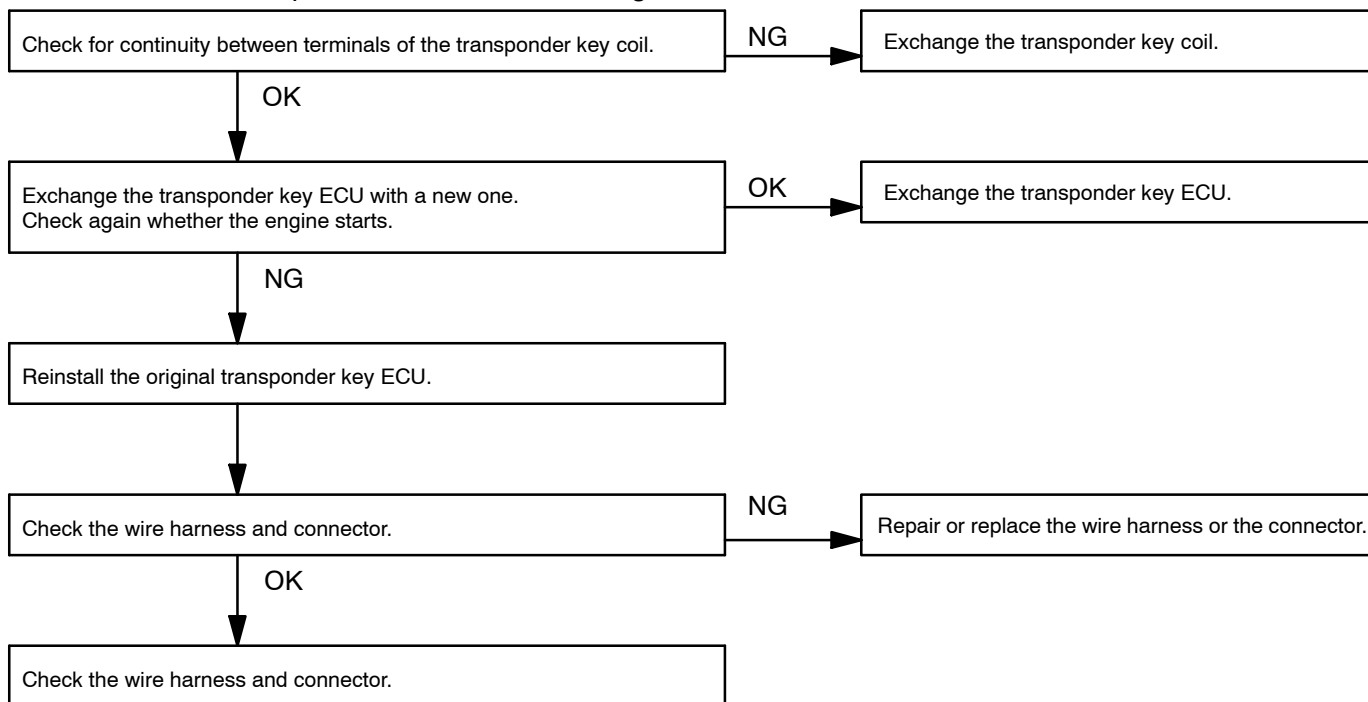
HINT:

- The code can be read using a luminous diode (Recommend activation current 10 – 20 mA) instead of a tester.
- A digital tester can also be used.

Display condition:

- When there are multiple codes, they are output in order starting from the lowest code.
- After all the codes are output, Lo is displayed for 4.5 secs., then all the code are output again starting from the lowest code.
- If the situation changes during code output, Lo is output for 4.5 secs. after output of the current code ceases, then the codes are output again starting from the lowest code. E.g. while 11 (out of 11 and 21) is being output, conditions change and 12 is added. So after 11 is output, Lo is output for 4.5 secs., then 11, 12 and 21 are output.

- If code 32 is output, troubleshoot according to this flow chart.



- If code 33 is output, troubleshoot according to this flow chart.

