

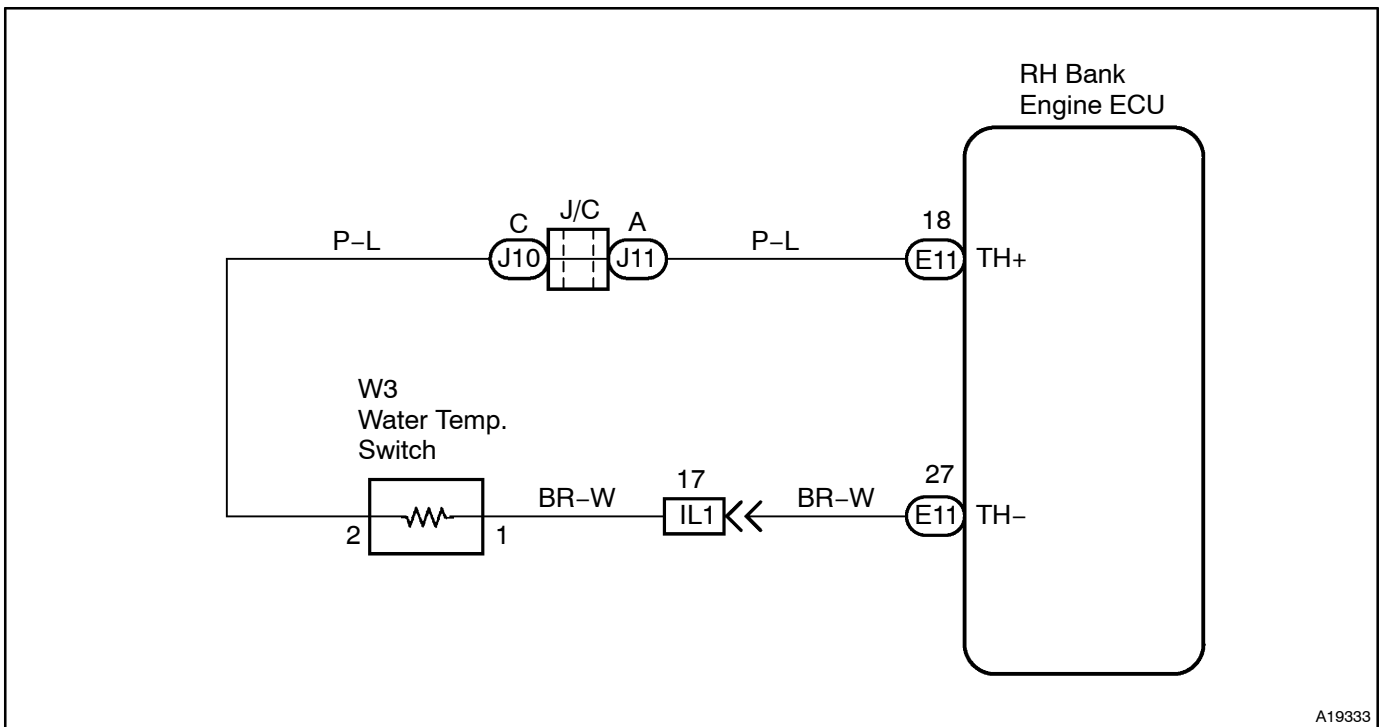
CIRCUIT INSPECTION

DTC	B1300/56	Water Temp. (For Electronically Controlled Hydraulic Cooling Fan) Circuit Malfunction
------------	-----------------	--

CIRCUIT DESCRIPTION

DTC No.	Detection Item	Trouble Area
B1300/56	When the ignition switch is ON, water temp. sensor circuit in open or short for 1 sec. or more.	<ul style="list-style-type: none"> • Water temp. sensor • RH bank engine ECU

WIRING DIAGRAM



INSPECTION PROCEDURE

1 Check water temperature sensor (See Pub. No. RM677E, page CO-41).

NG

Replace water temperature sensor.

OK

2 Check for open and short in harness and connector between water temperature sensor and RH engine ECU (See page N-20).

NG

Repair or replace harness or connector.

OK

Check and replace RH bank engine ECU (See page N-20).