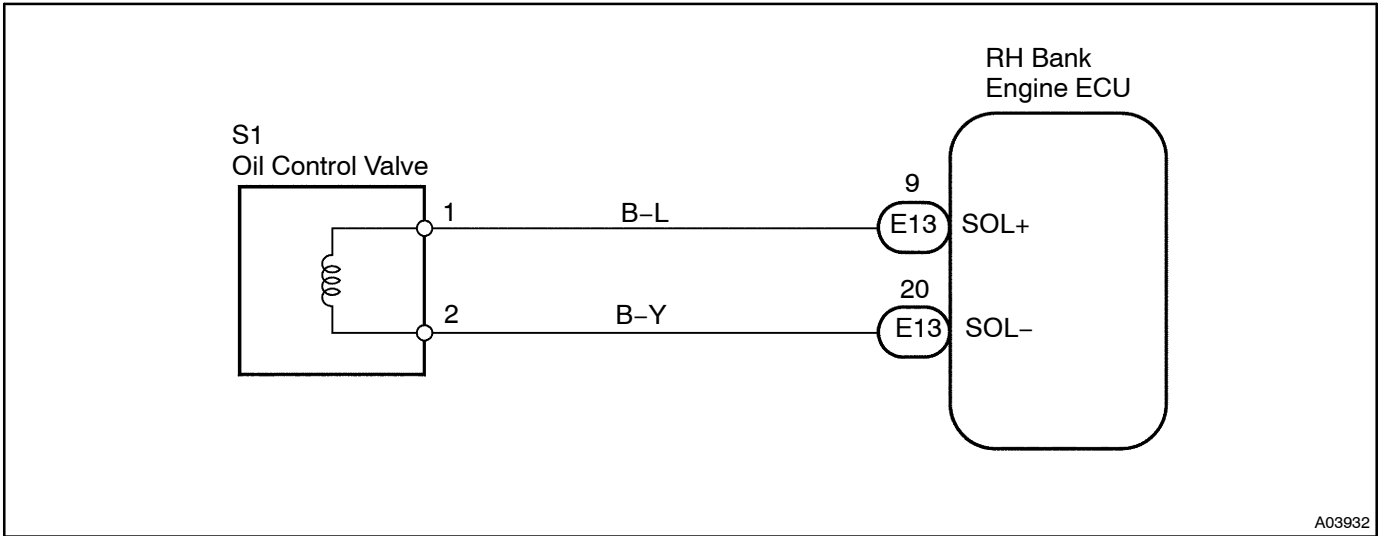


<b>DTC</b>	<b>B1305/57</b>	<b>Hydraulic Gear Motor Solenoid Circuit Malfunction</b>
------------	-----------------	--

### CIRCUIT DESCRIPTION

DTC No.	Detection Item	Trouble Area
B1305/57	When the ignition switch is ON, open or short in solenoid circuit for 1 sec. or more.	<ul style="list-style-type: none"><li>• Hydraulic gear motor</li><li>• RH bank engine ECU</li></ul>

### WIRING DIAGRAM



**INSPECTION PROCEDURE**

1 Check hydraulic gear motor solenoid (See Pub. No. RM677E, page CO-25).

NG

Replace hydraulic gear motor.

OK

2 Check for open and short in harness and connector between hydraulic gear motor solenoid and RH bank engine ECU (See page IN-20).

NG

Repair or replace harness or connector.

OK

Check and replace RH bank engine ECU (See page IN-20).